

DISTRICT AND BRANCH OFFICE CANCELLATIONS FROM DECEMBER 1856

CONTENTS

Introduction	Jiii -xiii
East Central District	J/EC/*
Eastern District	J/E/*
Northern District	J/N/1-11
North Eastern District	J/NE/1-3
North Western District	J/NW/1-10
Southern District	J/S/1-3
South Eastern District	J/SE/1-8
South Western District	J/SW/1-16
Western District	J/W/*
West Central District	J/WC/*
Branch Offices	J/BO/*

* These sections will follow shortly.

© 1979 John C. Parmenter and London Postal History Group

Published by:

London Postal History Group
24 Dovercourt Road
Dulwich, London SE22 8ST

INTRODUCTION

Rowland Hill as early as 1837 had suggested dividing London into Districts, with local offices handling correspondence received from and addressed to their respective areas. This proposal for district offices was strenuously opposed by the Post Office for many years. The existence of separate General Post and London District Post Letter carriers was the key to this opposition, because shortly after their amalgamation in 1854 the first serious consideration was given to the establishment of district offices. These two bodies had been separate organizations from the days of William Dockwra, with overlapping services and for a long time different rates. This anomaly was more obvious when uniform rates came in 1840. The key reason in preventing the amalgamation was the difference in status of the two bodies, one receiving much higher rates of pay than the other.

The setting up of district offices was forced on the Post Office by the ever increasing postal traffic after the introduction of uniform penny postage. Hill had forecast such an increase and it was one of his reasons for wanting district offices. But his criticisms were levelled at the Twopenny Post and his suggestions were intended to improve its service. Whilst he supported amalgamation of the General Post and Twopenny Post Letter Carriers, there is no evidence that he intended a district office to handle correspondence other than that for London posted within the district or that received from the Chief Office for delivery in the district.

In the Postmaster General's report for 1855 it was mentioned that for the purpose of accelerating the delivery of letters in the outer areas, certain arrangements were under consideration; among which was the establishment of District Offices. In the 1856 report the following details were published:

"We propose that London be divided into ten Districts each with a district sorting office, viz: two central and eight out Districts; - the out Districts stretching through the environs of London, and beyond until they reach the 12 mile circle by which the present London District is bounded.

"The collection, sorting, dispatch, and delivery of all London District letters should be made through the agency of these District Offices, each as regards its respective district.

"In defining the boundary lines which will divide the outer Districts one from the other, we have, after quitting London itself, followed the existing limits of the country deliveries of the London District Post except in a few instances - preserving, to a great extent, the present routes of the mail cart service. We have been able, in so doing, to observe a tolerably correct geographical distribution of the ground, in harmony with the designations given to the proposed Districts.

"The two Central Districts, we have thought, should include such an area, having the River Thames for a southern boundary, as will admit of all the Letter Carriers reaching the points at which their deliveries will commence in about ten or fifteen minutes from the time of leaving the District Office. The boundary lines of the outer districts will radiate from those of the two centres until they reach the 12 mile circle."

By the end of 1858 all ten offices had been set up as follows:

S.E.D.O.	24 March 1857	170 Borough High Street
W.D.O.	24 March 1857	19 Old Cavendish Street
W.C.D.O.	20 June 1857	126 High Holborn
N.W.D.O.	17 July 1857	57 Evershot Street
E.C.D.O.	end of 1857	St Martin's-le-Grand
E.D.O.	18 March 1858	Hassau Place, Commercial Road
S.W.D.O.	12 May 1858	Little Charlotte Street
N.D.O.	1 September 1858	Lower Islington
S.D.O.	1 September 1858	Kennington
N.E.D.O.	12 September 1858	Church Street, Bethnal Green.

The presence of these offices relieved the pressure on the Chief Office (which however still handled most of the mail for the provinces). In 1860 a report to the Treasury about the Circulation Department of the Post Office looked into the possibility of the District offices despatching bags to the Provinces:

".... We have enquired into the subject of office space, with a view to ascertaining whether increased room was, or soon would be, required in the Circulation Office, and have found that the Chief Office has already been greatly relieved by the establishment of nine district offices in London. By this measure a large number of letter carriers has been removed from the General Post to the district offices, and the delivery of letters has been very much accelerated. At these District Offices mails are received from towns in the provinces, and from the various railway travelling offices; and mails are also exchanged respectively between them. Thus an immense mass of correspondence which would otherwise centre at the office in St Martin's-le-Grand, is now disposed of without being brought into that building.

"We have considered whether further relief as to space might not be given, by despatching bags from as well as receiving them at, these District Offices; so that letters posted therein for the country need not circulate through the Chief Office; and whether, also additional time for posting might not thus be given to a very large portion of London.

"As regards the question of space ... it does not appear to us that there is at present a pressure so great as to render expedient the very large expense which would attend a general despatch of mails for the country from the district offices. As the correspondence of the Kingdom continues to increase, additional room at the central office will, no doubt, become necessary, and the possibility of adopting some such system of relief will, probably, be borne in mind."

The system provided for each District Office to send mail direct to every office at one hour intervals via the central offices:

N.W.D.O, W.D.O, and S.W.D.O. via W.C.D.O.

E.D.O, N.D.O, N.E.D.O, S.D.O. and S.E.D.O. via E.C.D.O.

The central offices exchange their own, and the transit bags, between themselves. By these arrangements it was possible to provide twelve deliveries and collections daily in the inner districts and seven deliveries and collections daily in the suburbs.

It cannot be established precisely when the district offices commenced sorting and disposal of posted correspondence for the provinces. Although seeing no justification for the expense involved in setting up a general arrangement on these lines in 1860, the report to the Treasury recommended a late fee service to provide a later posting time in London Districts. To ensure connection with the night mails district offices were to make up bags direct to the T.P.O.s.

It might well be that this service was introduced during 1860 or the following year but there is no evidence. All that is certain is that district offices were, by 1868, undertaking outward provincial sorting. During that year, as a means of relief to the Chief Office, some correspondence for the west of England and South Wales was concentrated on W.D.O. for disposal. In the following year correspondence for Dorset, Hampshire, etc, was concentrated on S.W.D.O. It is known that the system was extended by concentrating correspondence for other areas at other district offices but records of the developments and the reasons for them are not available. It is not unreasonable to assume that the Chief Office was demanding relief from the increasing traffic.

A few years' experience proved that the 1857/58 scheme had been somewhat over-ambitious. In 1866 a return of letters delivered in the N.E. district showed an average of 63 letters per delivery compared with 145 per delivery in the W. District. This prompted some reconsideration of the justification for the then existing districts arrangement. The Secretary of the time wrote to the Postmaster General:

"... I beg to recommend that the N.E. District Office be closed and that the portion of London served from that office together with the suburbs which are now attached to it be added to the district served from the Eastern Office. This proposition is made because a great saving of expense may thus be effected

partly by discontinuing the establishment of an office which is not needed for the public service and partly by diminishing the number of deliveries in an outskirt of the metropolis in which the accommodation now given greatly exceeds the wants of the population as shewn by the amount of correspondence. The total saving to be effected will be £2,725 6s. 8½d. per annum. The mode of effecting this will be the discontinuance of the District Post Office at Bethnal Green, now called the N.E.D.O., the transfer of four Letter Carrier walks to the Eastern Office, the four walks to be so transferred being the heaviest of those now attached to the N.E., and the diminution from twelve to seven deliveries daily over the other ten N.E. walks. In this case the Letter Carriers for those ten walks will work from the present North Eastern Sorting Office which I propose to call the Bethnal Green Office and which would be served by mail cart from the Eastern Office. Bethnal Green with Hackney and the other suburbs now dependent on the North Eastern Office will thus become suburbs under the Eastern Office ..."

The town walks were transferred on 20 December 1866 and the whole operation was completed by the end of the year. The first four weeks' operation were commented upon favourably on 21 January 1867.

In establishing the N.E. District, the Secretary appears to have acted somewhat arbitrarily and without the concurrence of a certain Mr Boucher who was Controller, Circulation Department. He complained that closing an office in the eastern part of London would present a very congested amount of extra traffic for the E.C. office.

Neither was the change acceptable to the public. Residents of Clapton and Hackney complained about the effect upon the value of their properties now to be "East" London. The Post Office bowed to public opinion to the extent of agreeing that letters could continue to be addressed "N.E." and issuing instructions for circulation to the E.D.O. In fact, the streets concerned continued to be listed as "N.E." until 1917 when the district numbering system was introduced.

The following year (1868) a further opportunity for economy presented itself. In August 1867 Mr Cunynghame, Metropolitan Surveyor, had reported to Mr Tilley, Secretary and Mr Boucher, Controller, Circulation Department. He said that the Southern Office was too far from the terminal stations of both railway lines in the south of London to be a good point for sorting; whilst on the other hand the positions of the South Western Office to Victoria and the South Eastern Office to the Borough or London Bridge termini were more convenient. He went on to say that the Southern Office delivery returns showed an average of 67 letters per delivery and there were many more important areas of London receiving only seven deliveries a day.

Mr Cunyninghame again wrote on 12 October 1867:

"... In my report of the 13th August last in which it was suggested that the Southern District Office should be placed in temporary charge instead of filling up the vacant Postmastership, I stated that I contemplated bringing forward the question of abolishing that district and I now submit the scheme which I have prepared with that object.

"I propose to divide the district between the South Western and South Eastern Districts, and to allot the force now at the Southern District Office between those offices according as it may be required.

"To the South Western District I propose to transfer the suburban districts of Clapham, Tooting, Merton, Stockwell, Brixton and Streatham. The adjoining districts of Carshalton, Sutton and Mitcham will shortly be placed under Mr Newman's control. (NOTE: They became post towns, in March, 1868, under the control of the S.E. Surveyor.)

"I do not propose at present to make any alterations in the arrangements of these suburban districts. They will be served from the South Western Office as they are now served from the Southern Office, and any revision which may appear to be required will be submitted in separate reports.

"To the South Eastern District I propose to transfer the whole of the Southern Town District and the suburban districts of Camberwell, Dulwich, Norwood and South Norwood. These suburban districts will also be transferred without any change in the present force and duties.

"The present Southern Town district is too extensive to admit of the deliveries being made direct from the South Eastern Office, and there is a marked difference in the character and importance of that part of it which skirts the river and takes in the business part of the Borough, and the more southerly portion (such as Walworth and the neighbourhood about Kennington Road and Kennington) which has a population consisting principally of persons of small means and tradesmen. The neighbourhood of Walworth, although served by letter carriers starting from the Southern District Office, has never had more than the accommodation usually given to a suburb, namely, seven deliveries and seven collections daily and I propose that that part of the Southern Town District known as Kennington and situated west of Walworth, and between Lambeth and St George's Roads upon the north and the roads leading from Vauxhall Bridge to the Kennington Road upon the south, be, with Walworth, formed into a suburban district to be called the Kennington District and treated in all respects as a boundary suburb ..."

The change brought strong and sustained protests from the residents throughout the Southern Town district against the reduction of deliveries and collections from twelve to seven daily. The matter was taken up in the press and Thomas Hughes, Esq, M.P. presented a petition to the P.M.G. Rowland Hill, in retirement, wrote to Mr Tilley, Secretary, in April 1868, expressing concern that his Reform plan was being altered. Nevertheless, the arrangement stayed.

The amended 1857-58 arrangements continued for some years but in 1875 the Metropolitan Surveyor, Mr Stow, whose office was costing almost £5,000 p.a. to run, brought to notice that he was absolutely overwhelmed with work, notwithstanding that by the previous year the London Districts area had been reduced in size by the creation of separate post towns (Postmasterships) at:

Barking, Ilford, Romford, Woodford, Woodford Green, Barnet, Edgware, Enfield, Harrow, Southall, Stanmore, Uxbridge, Waltham Cross, Watford.

Banstead, Bromley, Croydon, Dartford, Epsom, Mitcham, Sutton, Weybridge, Hounslow, Richmond, Staines, Twickenham.

The post towns came under the control of the Eastern, South Midland, South Eastern and South Western Surveyors.

Mr Stow blamed much of his overwork on the lack of co-operation of the (District) Postmasters, and the Secretary later charged him with the conduct of an Inquiry into the running of the London Districts. He was assisted by a Mr James, a Provincial Surveyor, who had had previous experience as Postmaster, Liverpool. The Inquiry made a comparison between the organisation of District offices and that of provincial postmasters offices; the report contained the following comments on the (London District) Postmasters:

"... Postmasters and Superintendents ... were selected from the Circulation Office where they had filled positions of importance though their work there was altogether of a uniform and routine character, devoid of variety, and not demanding any special exercise of tact, judgement or exceptional energy. Their attendance had been limited within fixed and convenient hours, and when they left their office, they were free from all responsibility and anxiety. They carried with them, therefore, to their new positions, habits of comparative ease, and they looked upon the new appointment as one in which they would be left very much to themselves, as they had been between their first selection as Assistant Controllers in charge of District Offices and their final appointment as Postmasters not required to incur greater labour or greater responsibility, and in fact perhaps less of either in every respect. This has been shown by the statements often repeated by them during this enquiry that they were "Day Officers" whose responsibility ceased altogether after

4 o'clock and they could not be expected after their former service to do more. They had been accustomed to the arrangements of a large Department in which the work from it to a great extent must necessarily be divided amongst various Branches, and carried on separately in each; and they brought with them the disposition to depute their work to the subordinate officers ..."

The Secretary (Mr Freeling) apparently took due note of the criticisms and the recommendations in Mr Stow's report of March 1875 and thought a reorganisation of the districts arrangements was due. At that time, in addition to the larger district offices there were a Branch Office at Charing Cross and district offices at Wimbledon and Woolwich. The reorganisation began in 1878. In that year Charing Cross Branch Office was amalgamated with W.C.D.O. The Western district was divided. The "Town" area remained as W.D.O. but the suburban areas came under the control of the newly created Paddington D.O. with the exception of Acton, Ealing and Hanwell which were controlled from the new Ealing D.O. (By 1901, Ealing D.O. had been downgraded to a R.O. and its area was transferred to the Paddington district).

Two years later further districts were created: Norwood from the most southerly portion of the S.E. district (later known as S.E.19-27). The area reverted to the S.E. district in 1925; Wandsworth from the southern portion of the S.W. district (now known as S.W.11-20). In 1897 the district office was transferred to Battersea without alteration to the area of control. It remains today as the Battersea District. At some time, unknown, the Wimbledon district was absorbed into the Wandsworth/Battersea district.

By 1917 the development of the London Postal area and the increasing postal traffic had outgrown the existing arrangements, and it was felt necessary to divide the London Districts still further. This was the numeral system that is still in use today. The timing of the introduction of the district numbering system was triggered by the pressure of events - the 1914-18 war - the need to conserve manpower - the replacement of permanent by temporary staff.

On 1 March 1917, public notices over the signature of the then Postmaster General, announced a "new and simpler method of address for letters for the London Postal Area:

"... In order to prevent delay and to save money and labour, I am introducing a system under which the address of every letter, parcel, postcard or other postal communication for the London Postal Area should include not only the district initials as at present, but also a number to designate the proper Office of Delivery, for example, S.W.4., S.E.10., and so on ..."

The notices offered free of charge a list of the principal streets in London (63 pages), showing in each case the initials of the Postal District and the number of the Office of Delivery. A separate

notification was sent to every occupier in the London Postal Area. The notices concluded with an appeal to everyone, everywhere, communicating with London residents to familiarise himself with the system, and to use it.

The system adopted was to divide the E.C. (Head) District into four sections and the W.C. (Head) District into two sections. This was done mainly to facilitate treatment of correspondence within the District Offices (from each of which deliveries for the whole area were made), enabling correspondence to be more easily divided into Postman's walks. The delivery offices in remaining districts were numbered in sequence corresponding to the alphabetical arrangement of the locality names of the Sub District Offices. Exceptionally, the Head District Offices (apart from Battersea, Norwood and Paddington) were numbered "1" in each postal district. The exceptions to this arrangement, arising from various causes, were:

- (a) There were two alphabetical sequences in the S.E. District due to the fact that until 1926 Norwood was a Head District Office;
- (b) Battersea as a Head District Office commenced a second alphabetical sequence in the S.W. District;
- (c) There were two Head District Offices in the W. area, numbered W.1 and W.2. Sub District Offices in the W. area were controlled from Paddington D.O. and were numbered in alphabetical sequence, to follow W.2. (Further exceptions were made in 1920 when Sub District Offices were created in Golders Green, numbered, out of alphabetical sequence, N.W.11, and at West Wimbledon, numbered out of alphabetical sequence, S.W.20.

The system was an immediate success. The public quickly learned to use, and, with a few exceptions, apparently did not object to using, the appropriate index letters and numerals on their correspondence. Sorting was simplified and speeded up, whilst missorting and consequential delay was greatly reduced. The numbering system had no apparent geographical significance; however, it did not entirely eradicate the habit of people who use a more 'fashionable' locality description in preference to the correct postal district indicator.

There are several references in the First Report of the Postmaster General 1854 to the problems associated with the rapid expansion of London and the chaotic street numbering that went on. The most amusing is: "The irregular numbers may generally be traced to the following causes. In the construction of new streets, the building of houses may commence at both ends, and on each side at the same time. The four corner houses are sometimes called number one. The other parts of the street may afterwards be built by different persons, who now can give to their houses whatever names they may think proper. One may prefer Albert Terrace, another Wellington Place, and a third wishing to preserve the family name will call his houses Smith's, Taylor's, or Bacon's Cottages, as the case may be. Each set of houses

having number one, will cause seven houses in the same street to be of the same number. Irregular numbers are also sometimes occasioned by the carelessness or ignorance of the persons who inhabit the houses, an instance of which came under my notice while going round with a letter carrier to survey one of the districts in the eastern part of London. On arriving at a house in the middle of the street, I observed a brass number 95 on the door, the houses on each side being numbered respectively 14 and 16. A woman came to the door, when I requested to be informed why 95 should appear between 14 and 16, said it was the number of a house she formerly lived at in another street, and it (meaning the brass plate) being a very good one she thought it would do for her present residence as well as any other."

Cancellations used in the Districts

These are listed by District in their Dubus series with an introductory page showing the types used.

Notes on how to use the catalogue listings

Two typical entries are shown below with explanations of the layout used in the catalogue:

"15D2 (Dubus fig.11) May 1858 (Oct.1858 to Mar.1862) Rarity A
Codes seen: 3,1,5,6,4,Mg,10,Z."

15 = the number in the cancellation

D2 = Dubus type 2. The Dubus type can sometimes be followed by a further letter:

D2C = Time in code

D2T = Time in full

D2* = Time in clock code

D2F = Flat topped three

D2R = Round topped three

Other subtypes are explained under each entry.

(Dubus fig.11) = the number of the illustration in Leon Dubus' two volume work on London Cancellations.

May 1858 = the first date (never shown in brackets) is the first Proof Book entry for this particular cancellation.

(Oct.1858 to Mar.1862) = the dates of use of the cancellation.

Codes seen: = these are listed in order of rarity, the most abundant first. "Times seen" is substituted when the time in full appears.

Rarity A = the rarity rating given to the particular cancellation. A is abundant and H is the rarest. For the full explanation see Appendix A to the Handbook Introduction.

Another possible entry is:

"15D3 (No Dubus fig.) not in proof books (not recorded) Rarity H-E"

(No Dubus fig.) = not illustrated by Dubus

(not recorded) = no dated copies known (Note: it may be relatively common on stamp only.)

Rarity H-E = rarity H for dated examples and rarity E for undated items, i.e. pieces or adhesives.

Pricing

The price of a cancellation must always depend on supply and demand and does not always reflect the true rarity of the item. At the time of preparation (December 1978) the following price guide is suggested; it is based on clean covers with the cheapest adhesive and no other markings of significance. List A is for the majority of items whilst List B is for the popular groups such as Late Fee, sideways duplex and Too Late marks.

<u>List A</u>	Rarity A	.40	<u>List B</u>	Rarity A	£3.00
	B	.55		B	£3.00
	C	£1.00		C	£3.50
	D	£1.50		D	£4.00
	E	£2.50		E	£6.00
	F	£4.00		F	£10.00
	G	£7.00		G	£15.00-£ 30.00
	H	£12.00		H	£20.00-£100.00

Bibliography

L. Dubus, "London Cancellations: Repairs and Re-cutting, From 1840", Robson Lowe, 1969-70.

J.W.A. Lowder and S.G. Dawkins, "London: Origin and Development of Districts and Postal Service", London Postal Organisation Study Group, 1969.

London Postal History Group Notebook

Proof Impression Books of the Post Office Records Department

DISTRICT AND BRANCH OFFICE CANCELLATIONS FROM DECEMBER 1856CONTENTS

Introduction	Jiii-xiii	II
East Central District	J/EC/1-40	III
Eastern District	J/ E/1-11	I
Northern District	J/ N/1-11	II
North Eastern District	J/NE/1- 3	II
North Western District	J/NW/1-10	II
Southern District	J/ S/1- 3	II
South Eastern District	J/SE/1- 8	II
South Western District	J/SW/1-16	II
Western District	J/ W/1-33	I
West Central District	J/WC/1-21	I
Branch Offices	J/BO/	IV

I this section part I

II published 1979

III published 1980

IV to be published

parts I and IV were first published in A5 format in 1975.

These parts are considerably revised and corrected.

© 1981 John C. Parmenter and London Postal History Group

Published by: London Postal History Group,
24 Dovercourt Road,
Dulwich, London, SE22 8ST

EXPLANATION OF THE CATALOGUE

A typical entry is:-

37D5 (Dubus fig.42) Nov.1877 (Dec.1878 to Feb.1879).....Rarity G
Code seen 1,12. Code prefix M.

37D5 is cancellation number 37 of Dubus type 5.

(Dubus fig.42) is the figure number from Dubus "London Cancellations"

Nov.1877 is the first Proof Book entry of this cancellation

(Dec.1878 to Feb.1879) these are the first and last dates of recorded use.

Rarity G this is rarity expressed in the range:-

- A..common
- B..average
- C..not common
- D..difficult
- E..scarce
- F..rare
- G..very rare
- H..very few exist
- G.P.O..Proof Book entry only

Rarity H means that either one cover has been recorded or that the cancellation has been seen on stamp only. I have used (Not seen) in the place of the date of use for cancellations only seen in the Proof Books ie rarity G.P.O. (Unrecorded) in the place of date of use means that no dated copies are known.

Rarity H-E means H for on cover and E for on stamp only

PRICES

These are current for Section J (August 1981)

Rarity A to C 50P to £2 depending on quality

Rarity D to E £2 to £7 depending on quality

Rarity F to H £7 to £30 depending on quality

Cancellations that are rare only because of a difference in the stamp code do not attract the prices shown above.

ILLUSTRATIONS

In preparing illustrations for this catalogue, photocopying machines have been used. These almost always reduce the size of the illustration. In some cases a figure may have been photocopied several times, in which case it will be visibly smaller than the original.

Many illustrations come from the Proof Books. These can have a different stamp code and an earlier date than the recorded period of use.

ADDITIONS TO THE CATALOGUE

If you have any comments or additions to the catalogue please address them to:-

London Postal History Group
24 Dovercourt Road
London SE22 8ST

EASTERN DISTRICT

DUBUS TYPE 1. WETSLEY FIG. 4 BRUMELL FIG. 75



1D1



2D1



3D1



4D1

<u>1D1</u>	(Dubus fig.1) Mar.1858 (Unrecorded).....	<u>Rarity H - G</u>
<u>2D1</u>	(Dubus fig.2) Mar.1858 (Aug.1858).....	<u>Rarity H - F</u>
<u>3D1</u>	(Dubus fig.3) Mar.1858 (May 1859).....	<u>Rarity H - G</u>
<u>4D1</u>	(Dubus fig.4) Mar.1858 (1858).....	<u>Rarity H - G</u>



5D1



6D1



7D1



8D1

<u>5D1</u>	(Dubus fig.5) Mar.1858 (1859).....	<u>Rarity H - E</u>
<u>6D1</u>	(Dubus fig.6) Mar.1858 (Apr.1859 to Jul.1862).....	<u>Rarity G - E</u>
<u>7D1</u>	(Dubus fig.7) Mar.1858 (1859 to 1862).....	<u>Rarity G - D</u>
<u>8D1</u>	(Dubus fig.8) Mar.1858 (Feb.1861).....	<u>Rarity H</u>



9D1



10D1



11D2



12D2

<u>9D1</u>	(Dubus fig.9) Mar.1858 (Not seen).....	<u>Rarity G.P.O.</u>
<u>10D1</u>	(Dubus fig.10) Mar.1858 (Not seen).....	<u>Rarity G.P.O.</u>

DUBUS TYPE 2. WESTLEY FIG. 5 BRUMELL FIG. 87

<u>11D2</u>	(Dubus fig.11) Mar.1858 (Sep.1858 to Nov.1862).....	<u>Rarity A</u>
Codes seen: 2, 3, 6, 7, 8, 8Mq, 10, 11, 12		
<u>12D2</u>	(Dubus figs.12a,b) Mar.1858 (Sep.1858 to Dec.1861).....	<u>Rarity B</u>
Codes seen: 1, 5, 6, 8, 8Mq, 8Nt, 12, X		



13D3



14D3



11D4



12D4



13D3 (Dubus fig.13) Feb.1859 (Feb.1859 to Jun.1862)..... Rarity D
Codes seen: 4, 5, 6, 7, 8Nt, 12, ZA.

14D3 (Dubus fig.14) Feb.1859 (May 1859 to Mar.1862)..... Rarity C
Codes seen: 3, 5, 6, 8Nt, 10, 12, X.

DUBUS TYPE 4. WESTLEY FIG. 8 BRUMELL FIG. 90

11D4 (Dubus fig.15) Nov.1862 (Jan.1863 to Jan.1866)..... Rarity C
Codes seen: 2, 3, 5, 6, 7, 10, X.

12D4 (Dubus fig.16) Nov.1862 (Dec.1862 to Dec.1865)..... Rarity B
Codes seen: 5, 6, 7, 12, X, Z.



15D4



1D5



2D5



13D5

15D4 (Dubus fig.17) Mar.1863 (Oct.1860 to Nov.1864)..... Rarity E
Codes seen: 2, 11, X.

DUBUS TYPE 5. WESTLEY FIG. 12 BRUMELL FIG. 92

1D5 (No Dubus fig.) Nov.1878 (Unrecorded)..... Rarity H
Code prefix A in Proof Book

2D5 (No Dubus fig.) Nov.1878 (Unrecorded)..... Rarity H
Code prefix B in Proof Book

13D5 (Dubus fig.18) Dec.1862 (May 1863 to Jul.1868)..... Rarity B
Codes seen: 1, 5, 6, 7, X.



14D5



15D5



16D5



17D5

14D5 (Dubus fig.19) Dec.1862 (Jan.1863 to Jan.1870)..... Rarity C
Codes seen: 3, 5, 6, 9, X.

15D5 (Dubus fig.20) Nov.1868 (Nov.1868 to Jun.1870)..... Rarity C
Codes seen: 5, 6, 7, ZZ.

16D5 (Dubus fig.21) May 1863 (Jul.1864 to Apr.1871)..... Rarity D
Codes seen: 4, 5, 6, 12, X, Z.

17D5 (Dubus fig.22) Feb.1864 (Feb.1865 to Sep.1867)..... Rarity C
Codes seen: 3, 5, 6, 7, X.



18D5



19D5



20D5



21D5



22D5

18D5 (Dubus fig.23) Mar.1866 (Jan.1867 to Jan.1869)..... Rarity C
Codes seen: 6, 7, 9, 12, X.

19D5 (Dubus fig.24) Mar.1866 (Mar.1866 to Jun.1868)..... Rarity C
Codes seen: 2, 3, 4, 7, X.

20D5 (Dubus fig.25) Mar.1867 (May 1867 to Jan.1868)..... Rarity D
Codes seen: 2, 3, 5, 7, 9, X.

21D5 (Dubus fig.26) Mar.1867 (Apr.1867 to Jan.1870)..... Rarity C
Codes seen: 5, 7, 9, 11, 12, X.

22D5 (Dubus fig.27) Mar.1867 (Mar.1867 to Oct.1870)..... Rarity C
Codes seen: 1, 2, 6, 7, X.



23D5



24D5



25D5



26D5

23D5 (Dubus fig.28) Nov.1868 (Dec.1868 to Jul.1871)..... Rarity C
Codes seen: 3, 4, 5, 7, 12, X.

24D5 (Dubus fig.29) Nov.1868 (Dec.1869 to May 1871)..... Rarity D
Codes seen: 2, 3, 6, 12, X, ZZ.

25D5 (Dubus fig.30) Nov.1868 (Jun.1869 to Dec.1870)..... Rarity B
Codes seen: 2, 3, 12, X.

26D5 (Dubus fig.31) Feb.1871 (Apr.1871 to Apr.1872)..... Rarity D
Code prefix A. Codes seen: 4, 10, 12, X.



27D5



28D5A



28D5B



29D5

27D5 (Dubus fig.32) Feb.1871 (Apr.1871 to Sep.1879)..... Rarity C
B is a code prefix. Codes seen: 2, 4, 6, 7, X.

28D5A (Dubus fig.33a) Feb.1871 (May 1871 to Jan.1874)..... Rarity C
C is a code prefix. Codes seen: 1, 2, 3, 6, 7, 12, X.

28D5B (Dubus figs.33b,c) Feb.1875 (1875 to Oct.1878)..... Rarity D
No code prefix. Codes seen: 1, 2, 4, 5, 11, X.

29D5 (Dubus figs.34a,b,c) Jun.1871 (Aug.1871 to Jul.1879)..... Rarity A
D is a code prefix. Codes seen: 1, 2, 3, 4, 5, 6, 7, 10, 11, 12, X.



30D5R



30D5F



31D5R



31D5F

30D5R (Dubus fig.35a) Jun.1871 (Jan.1872 to Apr.1875)..... Rarity C
Round topped three, E is a code prefix.
Codes seen: 1, 2, 3, 4, 5, 6, 7, 12, X.

30D5F (Dubus fig.35b) Nov.1877 (Mar.1878 to Feb.1884)..... Rarity F
Flat topped three, E is a code prefix.
Codes seen: 6, 7, 11.

31D5R (Dubus fig.36a) Jun.1871 (Aug.1871 to Oct.1874)..... Rarity B
Round topped three, F is a code prefix.
Codes seen: 3, 4, 5, 6, 12, X, ZX.

31D5F (Dubus fig.36b) Feb.1876 (Jul.1876 to Dec.1877)..... Rarity F
Flat topped three, F is a code prefix. Code seen: 7.



32D5R



32D5F



33D5R



33D5F

32D5R (Dubus fig.37a) Sep.1871 (May 1872 to Dec.1874)..... Rarity D
Round topped three, G is a code prefix.
Codes seen: 5, 12, X, ZZ.

32D5F (Dubus fig.37b) Feb.1876 (Jul.1876 to Apr.1878)..... Rarity F
Flat topped three, G is a code prefix.
Codes seen: 7, X.

33D5R (Dubus fig.38a) Sep.1871 (Jan.1872 to Jun.1875)..... Rarity C
Round topped three, H is a code prefix.
Codes seen: 3, X, ZZ.

33D5F (Dubus fig.38b) Feb.1876 (May 1876 to Dec.1878)..... Rarity D
Flat topped three, H is a code prefix.
Codes seen: 4, 5, 6, 12, X, ZZ.



34D5R



34D5FA



34D5FB



34D5R (Dubus fig.39a) Sep.1871 (Feb.1872 to Jul.1876)..... Rarity E
Round topped three, 1 is a code prefix. Codes seen: X, ZZ.

34D5FA (Dubus fig.39b) Sep.1876 (Dec.1877 to Aug.1878)..... Rarity G
Flat topped three. No code prefix. Codes seen: 11, ZZ.

34D5FB (Dubus fig.39c) Nov.1878 (Dec.1878 to Feb.1879)..... Rarity G
Flat topped three. J is a code prefix. Codes seen: ZX, ZZ.
Proof book entry has S as a code prefix; this has not been seen in use.



35D5R



35D5FA



35D5FB



35D5FB



35D5R (Dubus fig.40a) Sep.1871 (Nov.1871 to Oct.1880)..... Rarity C
Round topped three. K is a code prefix.
Codes seen: 5, 12, X, Z, ZX, ZZ.

35D5FA (Dubus fig.40b) Aug.1876 (Nov.1876 to Oct.1878)..... Rarity D
Flat topped three. No code prefix. Codes seen: X, ZX, ZZ.

35D5FB (Dubus fig.40c) Nov.1878 (Mar.1879 to Mar.1885)..... Rarity E
Flat topped three. K is a code prefix. Codes seen: 2, 3, X, ZX.
Proof book entry has C as a code prefix; this has not been seen in use.



36D5



37D5



38D5



38D5



39D5



36D5 (Dubus fig.41) Jan.1877 (May 1877 to Jan.1878)..... Rarity G
Code seen: X. Code prefix L.

- 37D5 (Dubus fig.42) Nov.1877 (Dec.1878 to Feb.1879)..... Rarity G
Code seen: 1, 12. Code prefix M.
- 38D5 (Dubus figs.43a,b) Jan.1875 (Sep.1875 to Jul.1876)..... Rarity C
Codes seen: 2, 5, 10, 12, X, ZZ. Code prefix N.
- 39D5 (Dubus fig.44) Jan.1875 (May 1875 to Feb.1878)..... Rarity F
Codes seen: 4, 7, 10, X, ZZ. Code prefix O.

DUBUS TYPE 6. WESTLEY FIG. 11 BRUMELL FIG. 78



2D6



3D6



4D6



7D6



8D6

- 2D6 (Dubus fig.45) Feb.1863 (Unrecorded)..... Rarity H - G
- 3D6 (Dubus fig.46) Feb.1863 (Apr.1863 to Jul.1864)..... Rarity G - E
- 4D6 (Dubus fig.47) Mar.1863 (Unrecorded)..... Rarity H - F
- 5D6 (Dubus fig.48) Mar.1863 (Unrecorded)..... Rarity H - F
- 6D6 (Dubus fig.49) Mar.1863 (Aug.1863)..... Rarity H
- 7D6 (Dubus fig.50) Mar.1863 (Unrecorded)..... Rarity H - D
- 8D6 (Dubus fig.51) Apr.1863 (May 1863 to Apr.1866)..... Rarity G - E
- 9D6 (Dubus fig.52) Apr.1863 (Unrecorded)..... Rarity H
- 10D6 (Dubus fig.53) Apr.1863 (Unrecorded)..... Rarity H

DUBUS TYPE 7. WESTLEY FIG. 14 BRUMELL FIG. 96



22D7



23D7

- 22D7 (Dubus fig.54) Sep.1867 (Apr.1868 to May 1869)..... Rarity G
C A is always the code.
- 23D7 (No Dubus fig.) Sep.1867 (Not seen)..... Rarity G.P.O.
C B is the code in the Proof Book entry. Two examples have been reported on stamps but they might be recuts of 23D5.

DUBUS TYPE 8. WESTLEY FIG. 13 BRUMELL FIG. 79

D.56 = Dubus fig.56

Jan.1872 = Proof Book entry



*Six Stamps supp'd
1. to 6 respectively
8 Sept 1873*

Sep.1873



D.56



Jan.1872



D.57



Jan.1872



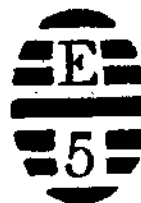
D.58



Jan.1872



Feb.1874



D.60



D.61



Jan.1872



Feb.1874



Jan.1872



D.64



Jan.1872



Feb.1874

<u>1D8</u>	(Dubus fig.56)	Jan.1872 (Unrecorded)	<u>Rarity H</u>
<u>2D8</u>	(Dubus fig.57)	Jan.1872 (Nov.1873)	<u>Rarity H</u>
<u>3D8</u>	(Dubus fig.58)	Jan.1872 (Unrecorded)	<u>Rarity H - G</u>
<u>4D8</u>	(No Dubus fig.)	Sep.1873 (Unrecorded)	<u>Rarity H</u>
<u>5D8</u>	(Dubus fig.60)	Sep.1873 (Unrecorded)	<u>Rarity H</u>
<u>6D8</u>	(Dubus fig.61)	Jan.1872 (Unrecorded)	<u>Rarity H</u>
<u>7D8</u>	(No Dubus fig.)	Feb.1874 (Not seen)	<u>Rarity G.P.O.</u>
<u>8D8</u>	(No Dubus fig.)	Jan.1872 (Not seen)	<u>Rarity G.P.O.</u>
<u>10D8</u>	(Dubus fig.64)	Jan.1872 (Sep.1872 to 1873)	<u>Rarity G</u>



AD9



BD9



CD9

DUBUS TYPE 9. WESTLEY FIG. 16 BRUMELL FIG. 82

AD9 (Dubus fig.65) Oct.1872 (Not seen)..... Rarity G.P.O.

BD9 (No Dubus fig.) Oct.1872 (Not seen)..... Rarity G.P.O.

CD9 (No Dubus fig.) Oct.1872 (Not seen)..... Rarity G.P.O.



38D10

DUBUS TYPE 10. WESTLEY FIG. 17 BRUMELL FIG. 94

This is not a duplex cancellation - the illustration above is the Proof Book entry.

38D10 (Dubus fig. 69) May 1873 (Unrecorded)..... Rarity H



26D11

27D11B

27D11B

DUBUS TYPE 11. WESTLEY FIG. 15 BRUMELL FIG. 93

26D11 (Dubus fig.70) Apr.1872 (May 1872 to Nov.1873)..... Rarity D
Code prefix A. Codes seen: 3, 4, 6, 7, 12, X.

27D11B (Dubus fig.71a) Apr.1872 (Apr.1872 to Jul.1885)..... Rarity B
Code prefix B. Codes seen: 1, 2, 3, 4, 5, 6, 7, 10, 11, 12, X.



27D11H

27D11H

28D11



28D11

29D11D

29D11R

27D11H (Dubus fig.71b) Dec.1878 (Jan.1879 to Apr.1885)..... Rarity E
Code prefix H. Codes seen: 1, 2, 7, X.

28D11 (Dubus figs.72a,b) May 1879 (Oct.1879 to Jan.1886)..... Rarity D
Code prefix C. Codes seen: 2, 5, 7, 11, 12, X.

29D11D (Dubus fig.73) Sep.1879 (Mar.1880 to Nov.1882)..... Rarity E
Code prefix D. Codes seen: 2, 3, 4, 5.

29D11R (No Dubus fig.) Sep.1884 (Mar.1883 to Sep.1885)..... Rarity F
Code prefix R. Codes seen: 2, 5, 7, X.



30D11



30D11



30D11



31D11



31D11



32D11

30D11 (Dubus figs.74a,b,c,d) Jun.1875 (Jul.1875 to Apr.1886).... Rarity B
Code prefix E. Codes seen: 4, 5, 7, 10, 12, X, Z.

31D11 (Dubus fig.75) May 1879 (Jun.1880 to Jul.1885)..... Rarity G
Code prefix F. Code seen: 7.

32D11 (Dubus fig.76) May 1879 (Jul.1881 to Aug.1888)..... Rarity D
Code prefix G. Codes seen: 3, 7, 10, X.



32D11



33D110



33D11D



34D11



34D11



35D11

33D110 (Dubus fig.77b) Dec.1878 (Apr.1879 to Apr.1881)..... Rarity F
Code prefix O. Codes seen: 5, X, ZX.

33D11D (Dubus fig.77a) Sep.1884 (1884)..... Rarity H
Code prefix D.

34D11 (Dubus figs.78a,b) Apr.1880 (Jul.1880 to Jul.1886)..... Rarity F
Code prefix J. Codes seen: 3, X, ZX.

35D11 (Dubus fig.79) Apr.1880 (Jul.1881 to Jul.1886)..... Rarity E
Code prefix K. Codes seen: 2, 6, ZZ.



35D11



36D11L



36D11L



36D11D



37D11M



37D11N

36D11L (Dubus figs.80a,c) Apr.1872 (Mar.1875 to Apr.1886)..... Rarity D
Code prefix L. Codes seen: 2, 3, 4, 5, 12, X, ZX, ZZ.

36D11D (Dubus fig.80b) Feb.1882 (Jul.1885 to Apr.1886)..... Rarity G
Code prefix D. Codes seen: 2, X.

37D11M (Dubus fig.81a) Apr.1872 (Apr.1874 to Sep.1875)..... Rarity E
Code prefix M. Codes seen: 1, 5, 6, X.

37D11N (Dubus fig.81b) Feb.1880 (Oct.1880 to Nov.1880)..... Rarity G
Code prefix N. Codes seen: 6, X.



38D11



39D11B



39D11P

38D11 (Dubus fig.82) Feb.1880 Code XZM (Oct.1879 to Jul.1886)... Rarity G
Code prefix N. Codes seen: 11, 12, ZZ.

39D11B (Dubus fig.83b) Dec.1878 (Jan.1879)..... Rarity G
Code prefix B. Codes seen 3, ZX.

39D11P (Dubus fig.83b) May 1879 (Oct.1879 to Aug.1880)..... Rarity G
Code prefix P. Code seen: X.

39D110 (Dubus fig.83a) No Proof Book entry (May 1880)..... Rarity H
Code prefix O. Code seen: XN.

- J/E/11 -



40D11P



40D11B



41D11

40D11P (Dubus figs. 84b,c) Apr.1878 (Nov.1878 to Dec.1881)..... Rarity F
Code prefix P. Codes seen: X, ZX, ZZ.

40D11B (Dubus fig.84a) May 1879 (Jul.1880)..... Rarity H
Code prefix B. Code seen: 7.

41D11 (Dubus fig.85) May 1883 (Nov.1887 to 1888)..... Rarity G
Code prefix A. Code seen: Z.

DUBUS TYPE 11 used as single obliterator:-

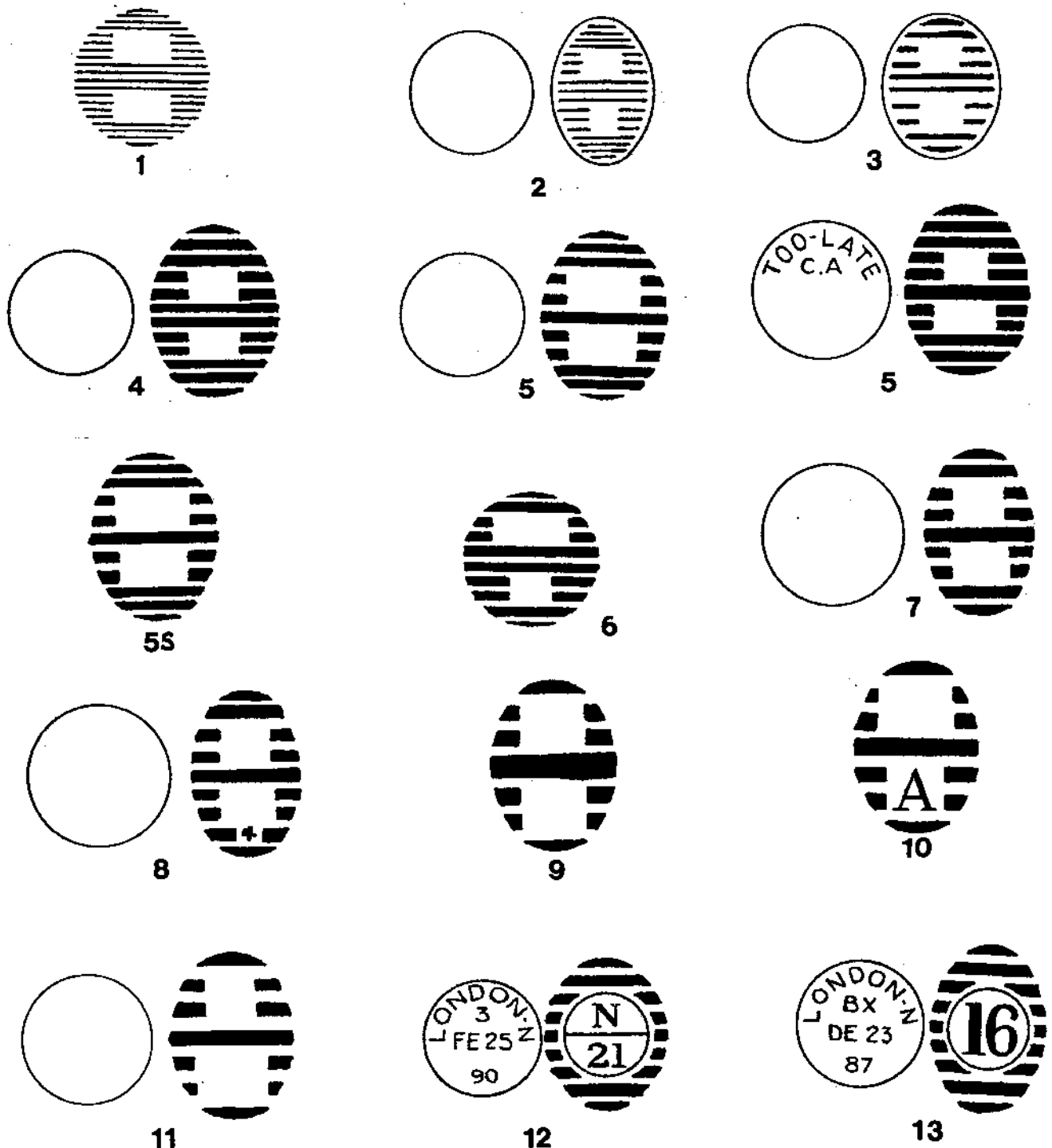
27D11S (No Dubus fig.) No Proof Book entry (Unrecorded)..... Rarity H
One example seen used on a newspaper wrapper. The obliterator
is the same as the duplex 27D11B

NORTHERN DISTRICT

by J. C. PARMENTER

The Northern District Office was first opened in Lower Street, Islington and the obliterators were sent out on 1 September 1858. The Suburban Offices started to sort and cancel their own mail in the 1870s, the obliterators used in these offices are the subject of Section K.

The following cancellations are all the types of barred numerals used in the Northern District Office - the numbers beneath each one are the Dubus type numbers by which the catalogue is arranged. The two types 12 and 13, although clearly of the Suburban Office type, were issued to the District Office and as far as can be ascertained, were used there.



NORTHERN DISTRICT

Dubus Type 1 Westley Fig.4 Brumell Fig.75



1D1



2D1



3D1



4D1



5D1

1D1	(Dubus Fig.1)	Sep.1858	(not recorded)	<u>Rarity H-(E)</u>
2D1	(Dubus Fig.2)	Sep.1858	(Dec.1858 to Jan.1859)	<u>Rarity G-(E)</u>
3D1	(Dubus Fig.3)	Sep.1858	(not recorded)	<u>Rarity H-(E)</u>
4D1	(Dubus Fig.4)	Sep.1858	(not recorded)	<u>Rarity H-(E)</u>
5D1	(Dubus Fig.5)	Sep.1858	(Dec.1861)	<u>Rarity H-(D)</u>



6D1



7D1



8D1



9D1



10D1

6D1	(Dubus Fig.6)	Sep.1858	(Dec.1858)	<u>Rarity H-(E)</u>
7D1	(Dubus Fig.7)	Sep.1858	(May 1859)	<u>Rarity H-(D)</u>
8D1	(Dubus Fig.8)	Sep.1858	(May 1859 to Sep.1859)	<u>Rarity G-(C)</u>
9D1	(Dubus Fig.9)	Sep.1858	(not recorded)	<u>Rarity H-(E)</u>
10D1	(Dubus Fig.10)	Sep.1858	(not recorded)	<u>Rarity H-(E)</u>



11D1



12D1



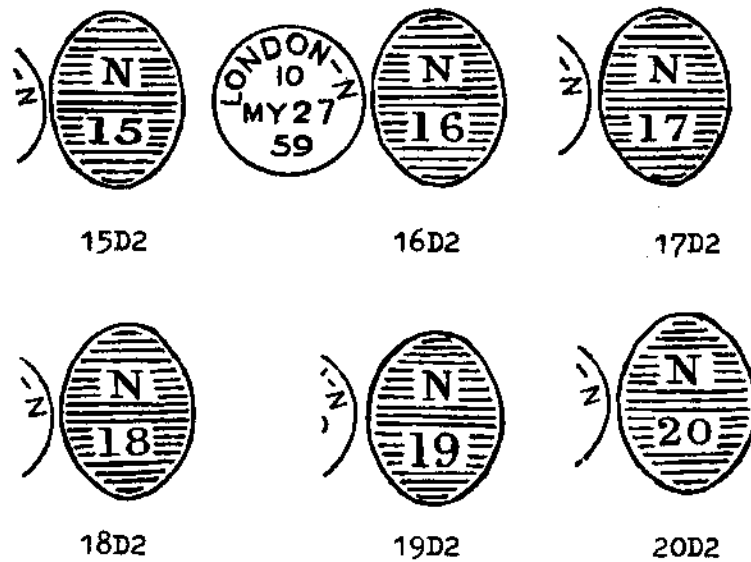
13D



14D1

11D1	(Dubus Figs.11a,b)	Sep.1858	(Nov.1859 to Mar.1860)	<u>Rarity F-(D)</u>
12D1	(Dubus Fig.12)	Sep.1858	(Apr.1860)	<u>Rarity H-(D)</u>
13D1	(Dubus Fig.13)	Sep.1858	(not recorded)	<u>Rarity H-(F)</u>
14D1	(Dubus Fig.14a,b)	Sep.1858	(not recorded)	<u>Rarity H-(E)</u>

Dubus Type 2 Westley Fig.6 Brumell Fig.88



15D2	(Dubus Fig.15) Sep.1858 (Nov.1858 to Nov.1862)	<u>Rarity F</u>
	Codes seen: 5, XA, 3.	
16D2	(Dubus Fig.16) Sep.1858 (Jul.1859 to Jul.1862)	<u>Rarity C</u>
	Codes seen: 7, X, 3, 11, 5, 1, 12, 6, 10.	
17D2	(Dubus Fig.17) Sep.1858 (Dec.1858 to Jan.1863)	<u>Rarity B</u>
	Codes seen: 6, 8Mg, 12, X, 8Nt, 3, 1, 11, 5, 2.	
18D2	(Dubus Fig.18) Sep.1858 (Apr.1859 to Nov.1862)	<u>Rarity C</u>
	Codes seen: 7, 5, 8Nt, X, 11, 3.	
19D2	(Dubus Fig.19) Sep.1858 (Oct.1859 to Mar.1862)	<u>Rarity C</u>
	Codes seen: X, 8Mg, 6, 3, 2, 5, 7.	
20D2	(Dubus Fig.20) Sep.1858 (Aug.1859 to Jun.1862)	<u>Rarity D</u>
	Codes seen: 12, X, 4, 2, 3, Z.	

Dubus Type 3 Westley Fig.8 Brumell Fig.90



19D3	(Dubus Fig.22) Nov.1862 (Feb.1863 to Jan.1867)	<u>Rarity C</u>
	Codes seen: 12, 4, 3, 2, 6, 9, B, Z.	
20D3	(Dubus Fig.23) Nov.1862 (Jun.1863 to Dec.1868)	<u>Rarity E</u>
	Codes seen: X, 2, 3, 9, B, 12.	
21D3	(Dubus Fig.21) Nov.1862 (Aug.1860 to Nov.1865)	<u>Rarity C</u>
	Codes seen: X, 12, Z, 2, 3, 4, 10.	

These three cancellations were issued in February 1870 in a recut state;
these have never been seen.

Dubus Type 4 Westley Fig.10 Brumell Fig.91



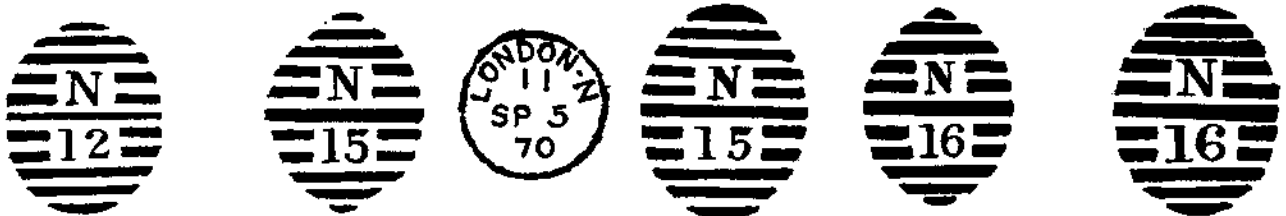
22D4

23D4

- 22D4 (Dubus Fig.24) Apr.1862 (Jul.1862 to Oct.1867) Rarity C
Codes seen: 7, X, 11, 3.
- 23D4 (Dubus Fig.25) Apr.1862 (Jun.1862 to Aug.1867) Rarity C
Codes seen: 7, X, 11, 3.

Dubus Type 5 Westley Fig.12 Brumell Fig.92

Subtype A: These were issued between 1862 and 1866.
Subtype B: These were issued from 1867 onwards.



12D5

15D5.A

15D5.B

16D5.A

16D5.B

- 11D5 (No Dubus Fig.) Nov.1869 (not recorded) Rarity GPO
- 12D5 (Dubus Fig.27) Nov.1869 (Oct.1878 to Jul.1879) Rarity E
Codes seen: 2, Z, ZX, 6, 12.
- 13D5 (No Dubus Fig.) Nov.1869 (not recorded) Rarity H
- 15D5.A (Dubus Fig.29a) Dec.1862 (Mar.1863 to May 1869) Rarity C
Codes seen: 7, 6, X, 1, 2, 4.
- 15D5.B (Dubus Fig.29b) Jul.1869 (Jul.1869 to Jul.1881) Rarity C
Codes seen: 3, X, XA, 1, 5.
- 16D5.A (Dubus Fig.30a) Dec.1862 (May 1863 to Nov.1866) Rarity E
Codes seen: X, 2, 6, 10, 7.
- 16D5.B (Dubus Figs.30b,c,d) Nov.1867 (Dec.1867 to Feb.1880) Rarity B
Codes seen: 7, 1, 2, 5, 10, 11, 12, ZZ, X, AX, ZX, A2.



17D5.A



17D5.A



17D5.B



17D5.C



18D5.A



18D5.B

- | | | |
|--------|---|-----------------|
| 17D5.A | (Dubus Figs.31a,b) Jan.1863 (Feb.1863 to Jan 1870)
Codes seen: 6, X, 5, 7, 1, 10. | <u>Rarity A</u> |
| 17D5.B | (Dubus Fig.31c) Mar.1871 (Jul.1872 to Sep.1879)
Codes seen: A7, A3, B7, BX, AZ, AX, B5, B12. | <u>Rarity C</u> |
| 17D5.C | (Dubus Fig.43) Aug.1874 (Oct.1874 to Jul.1880)
Codes seen: 7, ZX. | <u>Rarity G</u> |
| 18D5.A | (Dubus Fig.32a) Jan.1863 (Aug.1863 to Jan.1868)
Codes seen: X, 7, 1, 3, 5, 4, 6, 12. | <u>Rarity B</u> |
| 18D5.B | (Dubus Figs.32b,c) Jul.1868 (Jan.1869 to Oct.1879)
Codes seen: A7, AX, B7, BX, A12, A6. | <u>Rarity C</u> |



19D5



20D5



21D5



22D5



23D5



24D5

- | | | |
|------|--|-----------------|
| 19D5 | (Dubus Figs.33a,b,c,d) Feb.1870 (Mar.1873 to Mar.1882)
Codes seen: 7, 1, X, XA, 11, Z, 4, 5, 12. | <u>Rarity B</u> |
| 20D5 | (Dubus Fig.34) Feb.1870 (Apr.1870 to Jun.1875)
Codes seen: X, ZZ, A12. | <u>Rarity F</u> |
| 21D5 | (Dubus Figs.35a,b,c,d) Jan.1869 (May 1869 to Oct.1884)
Codes seen: D7, D3, ZZ, X, 5, 12, 3, 6, 7, D12, DX, A5 | <u>Rarity B</u> |
| 22D5 | (Dubus Figs.36a,b) Jan.1868 (Nov.1868 to Feb.1879)
Codes seen: X, 7, ZZ, 1, 3, 4, 5, 6, 10, ZX. | <u>Rarity C</u> |
| 23D5 | (Dubus Figs.37a,b,c,d) Jan.1868 (Jun.1868 to Jul.1883)
Codes seen: ZX, ZZ, X, 1, 12, Z, 5. | <u>Rarity C</u> |
| 24D5 | (Dubus Figs.38a,b) Jan.1869 (Mar.1869 to Jun.1878)
Codes seen: 6, XA, X, Z, ZX, 4, 11, 12. | <u>Rarity D</u> |
| 25D5 | (Dubus Figs.39a,b) Feb.1870 (Sep.1870 to Jul.1890)
Codes seen: XA, 12, X, ZZ, 2, 7, 11, ZX, Z. | <u>Rarity C</u> |
| 26D5 | (Dubus Figs.40a,b,c) Feb.1870 (Feb.1870 to Oct.1888)
Codes seen: ZX, ZZ, 12, 3, X, 1, 2, 5. | <u>Rarity B</u> |
| 27D5 | (Dubus Fig.41) Sep.1874 (Mar.1875 to Oct.1880)
Codes seen: ZZ, ZX, X. | <u>Rarity E</u> |



25D5



26D5



27D5



28D5

28D5C (Dubus Figs.42a,b) Sep.1874 (Jan.1876 to Jul.1895)
Time in code. This cancellation has been seen with only two
bars at the base of the obliterator (May 1887).
Codes seen: ZZ, ZE, ZX, Z, X, 10.

Rarity C

28D5T (Dubus Fig.42c) not in proof books (Dec.1903 to May 1906)
Time in full
Times seen: 8.30 PM, 7.30 PM.

Rarity G

Dubus Type 5 Westley Fig.14 Brumell Fig.96



22D5/TL

22D5/TL (Dubus Fig.44) Oct.1867 (not recorded)

Rarity GPO

23D5/TL (No Dubus Fig.) Oct.1867 (Sep.1870)
Code seen: CB

Rarity H

Dubus Type 5(2) Westley does not separate them Brumell Fig.81

This series does not have date stamps.
/S = single cancellation



1D5/S



4D5/S

1D5/S (Dubus Fig.46) Sep.1870 (not recorded)

Rarity H

2D5/S (No Dubus Fig.) Sep.1870 (not recorded)

Rarity GPO

4D5/S (Dubus Fig.50) Sep.1870 (Feb.1873)

Rarity G



8D5/S



10D5/S



11D5/S

5D5/S	(No Dubus Fig.)	Sep.1870	(not recorded)	<u>Rarity H</u>
8D5/S	(Dubus Fig.48)	Jan.1869	(not recorded)	<u>Rarity H</u>
9D5/S	(No Dubus Fig.)	Jan.1869	(not recorded)	<u>Rarity H</u>
10D5/S	(Dubus Fig.52)	Jan.1869	(not recorded)	<u>Rarity H</u>
11D5/S	(Dubus Fig.53)	Jan.1869	(not recorded)	<u>Rarity H</u>
12D5/S	(No Dubus Fig.)	Sep.1870	(not recorded)	<u>Rarity GPO</u>

Dubus Type 6 Westley Fig.11 Brumell Fig.78

This series does not have date stamps.



1D6



5D6

1D6	(Dubus Fig.55)	Jun.1863	(not recorded)	<u>Rarity H</u>
2D6	(No Dubus Fig.)	Jun.1863	(not recorded)	<u>Rarity H</u>
3D6	(No Dubus Fig.)	Jun.1863	(not recorded)	<u>Rarity H</u>
5D6	(Dubus Fig.58)	Jun.1863	(not recorded)	<u>Rarity H</u>
6D6	(No Dubus Fig.)	Jun.1863	(not recorded)	<u>Rarity GPO</u>
7D6	(No Dubus Fig.)	Jan.1869	(not recorded)	<u>Rarity GPO</u>
9D6	(No Dubus Fig.)	Jun.1863	(not recorded)	<u>Rarity H</u>

Dubus Type 7 Westley Fig.15 Brumell Fig.93

This series has date stamps.



12D7



13D7



15D7



16D7

12D7	(Dubus Figs.61a,b,c,d)	Mar.1880	(Nov.1880 to Mar.1896)	<u>Rarity B</u>
Fig.61a in proof books Mar.1880; Fig.61c Apr.1887				
Codes seen: 2, ZZ, 5, 6, 11, X, 7, 12.				

- 13D7 (Dubus Fig.62) Jun.1882 (Aug.1884 to Jan.1887) Rarity E
Codes seen: D3, D5, D7, A7, 12, D2.
- 15D7 (Dubus Fig.63) Jul.1883 (Feb.1884 to Dec.1891) Rarity G
Codes seen: ZX, ZZ, 5.
- 16D7 (Dubus Fig.64) Jun.1880 (Apr.1881 to Sep.1888) Rarity E
Codes seen: C7, CX, B6, B7.
- 17D7C (Dubus Fig.65) May 1887 (Jul.1886 to Aug.1899) Rarity C
This has been recorded by F.C. Holland with an inverted N,
see illustration in the Philatelic Adviser, 1937, vol.5,
part 2, p.29. (This is the only one recorded)
Time in code
Codes seen: 7, X, 11, XA, 3, 4, 10, 2X, 2.
- 17D7* (Dubus Fig.65) May 1887 (Feb.1895 to Aug.1896) Rarity E
Time in clock code with asterisk
Codes seen: FH, FH+P, LC+A, F+P
- 17D7T (Dubus Fig.65) May 1887 (Aug.1896 to Nov.1896) Rarity G
Time in full
Times seen: 6.15 PM, 6.45 PM



17D7



Inverted



18D7



19D7



20D7

- 18D7C (Dubus Figs.66a,b,c,d) May 1880 (Jun.1881 to May 1895) Rarity E
Fig.66a in proof books May 1880; Fig.66b Mar.1882;
Fig.66c Mar.1887; Fig.66d Dec.1885.
Time in code
Codes seen: A5, A7, A12, ZX, XZ, X.
- 18D7T (Dubus Fig.66c) Mar.1887 (Apr.1897 to Jan.1901) Rarity F
Time in full
Times seen: 9.30 PM, 6.15 PM, 7.30 PM.
- 19D7C (Dubus Fig.67a,b) Jul.1882 (Nov.1880 to Jan.1893) Rarity C
Fig.67a in proof books Jul.1882; Fig.67b Mar.1887
In use prior to the first entry in the proof book
Time in code
Codes seen: 6, 7, 3, 4, 12, A7, ZZ, ZX, D7.
- 19D7T (Dubus Fig.67b) Mar.1887 (Jan.1897 to Feb.1899) Rarity F
Time in full
Times seen: 8.30 PM, 9.30 PM.
- 20D7 (Dubus Figs.68a,b,c,d,e) Jan.1872 (Mar.1872 to Feb.1892) Rarity B
Circular date stamp varies in size
Time in code
Codes seen: CX, AX, A12, C7, A11, C12, C3, D2, U2, A2.
- 22D7 (Dubus Fig.69) Jun.1880 (Mar.1881 to Mar.1888) Rarity C
Time in code
Codes seen: C5, C7, C2, C12, B7, B6, A5, ZZ.



22D7



24D7



26D7



27D7

- 24D7C (Dubus Fig.70a) Jun.1880 (Sep.1880 to Dec.1895) Rarity F
Time in code
Codes seen: AZX, ZZ, XZ, P7.
- 24D7T (Dubus Fig.70b) Not in proof books (Jul.1896 to Apr.1897) Rarity G
Time in full
Times seen: 10.30 PM, 6.35 PM.
- 26D7C (Dubus Figs.71a,b) Aug.1882 (Nov.1883 to May 1892) Rarity C
Time in code
Codes seen: 6, 3, 7, 10, X, 4, 5, ZX.
- 26D7* (Dubus Fig.71c) Not in proof books (Jun.1895) Rarity H
Clock code with asterisk
Code seen: GF.P.
- 27D7 (Dubus Fig.72) Not in proof books (Feb.1885 to Oct.1885) Rarity G
Codes seen: ZZ, 12.

Dubus Type 8

Westley does not illustrate

Brumell Fig.98



12D8



15D8

- 12D8 (Dubus Fig.73) Not in proof books (Dec.1895 to Apr.1902) Rarity F
Time in full
Times seen: 12.15 AM, 7.15 PM, 8.30 PM.
- 15D8 (Dubus Fig.74) Not in proof books (Sep.1895 to Mar.1906) Rarity F
Time in full
Times seen: 11.15 AM, 12.15 AM, 5.15 PM, 6.45 PM, 7.30 PM.

Dubus Type 9 Westley Fig.17 Brumell Fig.79

No circular date stamp



2D9

4D9

8D9

10D7

12D7

1D9	(No Dubus Fig.)	Oct.1874	(not recorded)	<u>Rarity H</u>
2D9	(Dubus Fig.75)	Jul.1872	(not recorded)	<u>Rarity H</u>
4D9	(Dubus Fig.76)	Jul.1872	(not recorded)	<u>Rarity H</u>
5D9	(No Dubus Fig.)	Jul.1872	(not recorded)	<u>Rarity GPO</u>
8D9	(Dubus Fig.78)	Jul.1872	(not recorded)	<u>Rarity H</u>
9D9	(No Dubus Fig.)	Oct.1874	(not recorded)	<u>Rarity H</u>
10D9	(Dubus Fig.79)	Oct.1874	(not recorded)	<u>Rarity H</u>
11D9	(No Dubus Fig.)	Jul.1872	(not recorded)	<u>Rarity H</u>
12D9	(Dubus Fig.81)	Jul.1872	(not recorded)	<u>Rarity H</u>
18D9	(No Dubus Fig.)	Oct.1874	(not recorded)	<u>Rarity GPO</u>

Dubus Type 10 Westley Fig.16 Brumell Fig.82



AD10

AD10	(Dubus Fig.82)	Oct.1872	(not recorded)	<u>Rarity H</u>
BD10	(No Dubus Fig.)	Oct.1872	(not recorded)	<u>Rarity GPO</u>
CD10	(No Dubus Fig.)	Oct.1872	(not recorded)	<u>Rarity H</u>

Dubus Type 11 Westley Fig.17 Brumell Fig.94



30D11

30D11 (Dubus Fig.85) May 1873 (Dec.1873 to Jul.1874)
Time in code
Codes seen: CX, C5.

Rarity G

Dubus Type 11 Westley Fig.28 Brumell Fig.70



23D11T

21D11A (Dubus Figs.86a,b) Feb.1887 (Aug.1886 to Apr.1893)
Mid bar; used prior to first entry in proof books
Time in code
Codes seen: 7, 4, 3, 5, 12, X, Z.

Rarity C

21D11B (Dubus Fig.86c) Nov.1890 (Aug.1891 to Feb.1895)
No mid bar
Time in code
Codes seen: 7, 5, X, 3, 4, 6, 1.

Rarity D

23D11C (Dubus Fig.87) Feb.1887 (Apr.1889 to Dec.1895)
Time in code
Codes seen: ZZ, X, CX.

Rarity E

23D11T (Dubus Fig.87) Feb.1887 (Aug.1896 to Feb.1899)
Time in full
Times seen: 4.50 PM, 10.30 PM, 12.30 PM.

Rarity G

Dubus Type 12 Westley Fig.29 Brumell Fig.69



16D12

16D12C (Dubus Fig.88) Jul.1887 (Aug.1887 to Jun.1894)
Time in code
Codes seen: XZ, B3, B11, 1, 5, Z, ZX, 4, B7

Rarity C

- J/N/11 -

16D12T (Dubus Fig.88) Jul.1887 (Sep.1898 to Jun.1899)
Time in full
Times seen: 12.15 PM, 7.30 PM.

Rarity G

End of Northern District

NORTH EASTERN DISTRICT

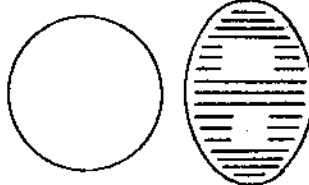
by J. C. PARMENTER

The North Eastern District Office was first opened at 78 Church Street, Bethnal Green and obliterations were sent out on 12 October 1858. The District was absorbed into the Eastern District as from 21 January 1867.

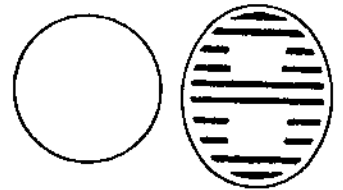
The following cancellations are all the types of barred numerals used in the North Eastern District Office - the numbers beneath each one are the Dubus type numbers by which the catalogue is arranged.



1



2



3



4



5



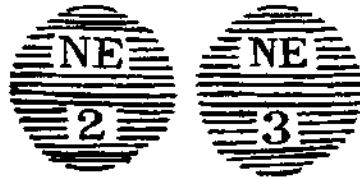
6

NOTE: An example of Dubus type 3 number 9, has been seen on a penny red plate number 149 - the earliest known example is July 1871; however the N.E. office ceased to exist as of January 1867. Until a cover or piece turns up this must remain a puzzle.

NORTH EASTERN DISTRICT

Dubus Type 1 Westley Fig.4 Brumell Fig.75

No circular date stamp.



2D1

3D1

1D1	(Dubus does not illustrate)	Oct.1858	(not recorded)	<u>Rarity H</u>
2D1	(Dubus Fig.2)	Oct.1858	(Mar.1859 to Jul.1860)	<u>Rarity G-(F)</u>
3D1	(Dubus Fig.3)	Oct.1858	(Jul.1859)	<u>Rarity H</u>
4D1	(Dubus does not illustrate)	Oct.1858	(not recorded)	<u>Rarity H</u>
5D1	(Dubus does not illustrate)	Oct.1858	(not recorded)	<u>Rarity H</u>
6D1	(Dubus does not illustrate)	Oct.1858	(not recorded)	<u>Rarity GPO</u>
7D1	(Dubus does not illustrate)	Oct.1858	(not recorded)	<u>Rarity GPO</u>
8D1	(Dubus does not illustrate)	Oct.1858	(not recorded)	<u>Rarity H</u>
9D1	(Dubus does not illustrate)	Oct.1858	(not recorded)	<u>Rarity GPO</u>
10D1	(Dubus does not illustrate)	Oct.1858	(not recorded)	<u>Rarity GPO</u>
11D1	(Dubus does not illustrate)	Oct.1858	(not recorded)	<u>Rarity GPO</u>
12D1	(Dubus does not illustrate)	Oct.1858	(not recorded)	<u>Rarity GPO</u>
13D1	(Dubus does not illustrate)	Oct.1858	(not recorded)	<u>Rarity GPO</u>
14D1	(Dubus does not illustrate)	Oct.1858	(not recorded)	<u>Rarity GPO</u>

Dubus Type 2 Westley Fig.6 Brumell Fig.88

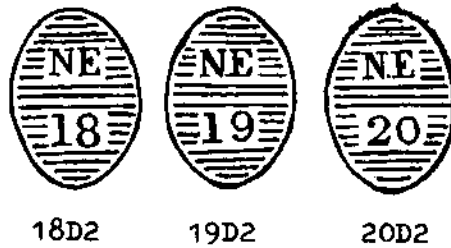


15D2

16D2

17D2

15D2	(Dubus Fig.15)	Oct.1858	(Feb.1859 to Sep.1861)	<u>Rarity C</u>
	Codes seen:	8Nt, 3, 5, 6, X.		
16D2	(Dubus Fig.16)	Oct.1858	(Jan.1859 to Jul.1862)	<u>Rarity C</u>
	Codes seen:	X, 8Mg, 8Nt.		
17D2	(Dubus Fig.17)	Oct.1858	(Jul.1859 to Apr.1862)	<u>Rarity B</u>
	Codes seen:	12, 8Mg, 5, 6, 7, 10, 3, X, 11.		



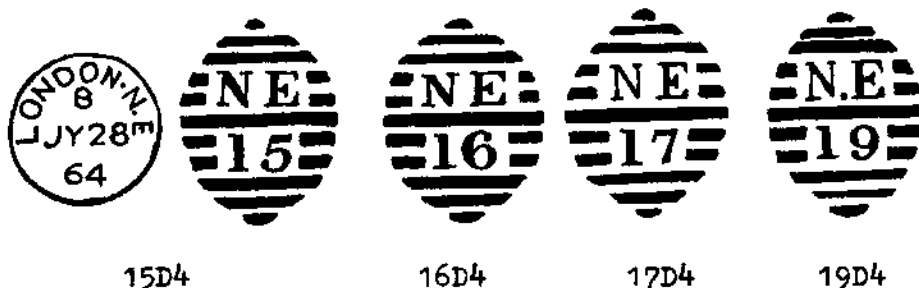
18D2	(Dubus Fig.18)	Oct.1858	(Jan.1859 to May 1860)	<u>Rarity E</u>
	Codes seen:	3, 1, 4, 5.		
19D2	(Dubus Fig.19)	Oct.1858	(Feb.1859 to Oct.1862)	<u>Rarity C</u>
	Codes seen:	12, 6, 7, 1, 5, 8, 10.		
20D2	(Dubus Fig.20)	Oct.1858	(Dec.1858 to Jul.1862)	<u>Rarity E</u>
	Codes seen:	3, 6, 5.		

Dubus Type 3 Westley Fig.8 Brumell Fig.90



18D3	(Dubus Fig.22)	Dec.1862	(Dec.1862 to Jul.1865)	<u>Rarity E</u>
	Codes seen:	X, 3, 5, 9, 10, 12.		
20A.D3	(Dubus Fig.21)	Sep.1860	(Nov.1860 to Oct.1864)	<u>Rarity E</u>
	Codes seen:	X, 12, 7, 8.		
20B.D3	(Dubus Fig.23)	Dec.1862	(Jul.1862 to Nov.1866)	<u>Rarity D</u>
	Codes seen:	X, 7, 2, 6.		

Dubus Type 4 Westley Fig.12 Brumell Fig.92



15D4	(Dubus Fig.24)	Jan.1863	(Mar.1863 to Jan.1867)	<u>Rarity C</u>
	Codes seen:	X, 5, 2, B, 8, 11, 12.		
16D4	(Dubus Fig.25)	Jan.1863	(Jul.1863 to Nov.1866)	<u>Rarity A</u>
	Codes seen:	5, 12, X, 7, 1, 6, 2.		
17D4	(Dubus Fig.26)	Jan.1863	(Jun.1863 to Sep.1865)	<u>Rarity F</u>
	Codes seen:	X, 7, 12.		
19D4	(Dubus Fig.27)	Jan.1863	(Mar.1863 to Dec.1865)	<u>Rarity C</u>
	Codes seen:	7, X, 5, 6.		

Dubus Type 5 Westley Fig.11 Brumell Fig.78



5D5

1D5	(Dubus does not illustrate)	Jan.1863	(not recorded)	<u>Rarity GPO</u>
2D5	(Dubus does not illustrate)	Jan.1863	(not recorded)	<u>Rarity GPO</u>
3D5	(Dubus does not illustrate)	Jan.1863	(Aug.1866)	<u>Rarity H</u>
4D5	(Dubus does not illustrate)	Jan.1863	(not recorded)	<u>Rarity GPO</u>
5D5	(Dubus Fig.32)	Jan.1863	(not recorded)	<u>Rarity H</u>
6D5	(Dubus does not illustrate)	Jan.1863	(not recorded)	<u>Rarity GPO</u>

Dubus Type 6 Westley Fig.10 Brumell Fig.91



13D6



14D6

13D6	(Dubus Fig.34)	Dec. 1865	(Aug.1865 to Dec.1866)	<u>Rarity D</u>
	Codes seen:	6, 7, 2, 5, 9, 12.		
14D6	(Dubus Fig.35)	Dec.1865	(Feb.1865 to Jan.1867)	<u>Rarity C</u>
	Codes seen:	7, 2, 5, 6, X, 12.		

End of North Eastern District

NORTH WESTERN DISTRICT

by J. C. PARMENTER

The North Western District Office was first opened at 57 Eversholt Street, Camden Town and oblitters were sent out on 17 July 1857. The Suburban Offices started to sort and cancel their own mail in the 1870s; the oblitters used in these offices are the subject of Section K.

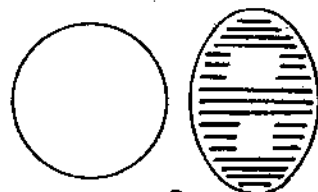
The following cancellations are all the types of barred numerals used in the Northern District Office - the numbers beneath each one are the Dubus type numbers by which the catalogue is arranged.



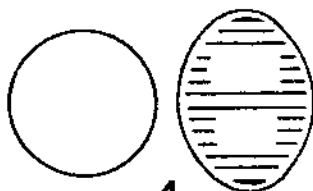
1



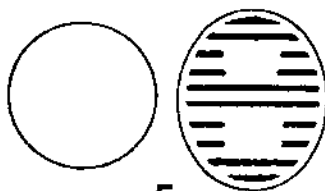
2



3



4



5



6



7



7S



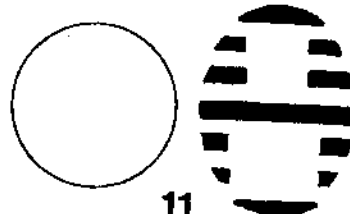
8



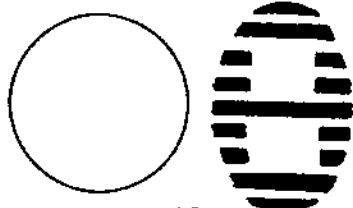
9



10



11



12



12S

NORTH WESTERN DISTRICT

Dubus Type 1 Westley Fig.4 Brumell Fig.75



1D1



2D1



3D1



4D1



5D1



6D1



7D1



8D1

1D1	(Dubus Fig.1)	Jul.1857	(Jan.1858 to Apr.1859)	<u>Rarity G-(E)</u>
2D1	(Dubus Fig.2)	Jul.1857	(Mar.1858 to May 1861)	<u>Rarity E</u>
3D1	(Dubus Fig.3)	Jul.1857	(Jul.1858 to Feb.1859)	<u>Rarity G-(E)</u>
4D1	(Dubus Fig.4)	Jul.1857	(not recorded)	<u>Rarity H-(F)</u>
5D1	(Dubus Fig.5)	Jul.1857	(Feb.1858 to Sep.1858)	<u>Rarity G-(E)</u>
6D1	(Dubus Fig.6)	Jul.1857	(not recorded)	<u>Rarity H-(G)</u>
7D1	(Dubus Fig.7)	Jul.1857	(Dec.1859)	<u>Rarity H-(E)</u>
8D1	(Dubus Fig.8)	Jul.1857	(Nov.1862)	<u>Rarity H-(G)</u>

Dubus Type 2 Westley Fig.3 Brumell Fig.85



9D2

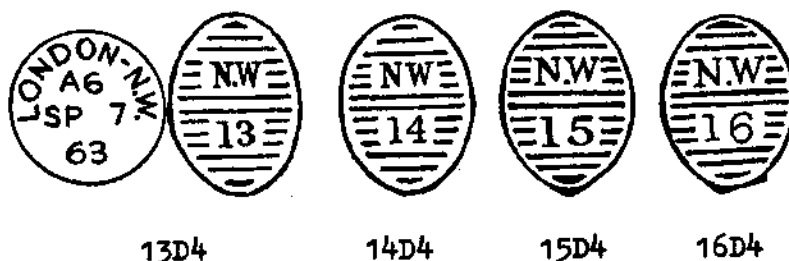
9D2	(Dubus Fig.9)	Jul.1857	(Feb.1858 to Oct.1862)	<u>Rarity B</u>
Codes seen: 5, 12, 8Nt, 6, 2, 4, 8Mg, XA.				

Dubus Type 3 Westley Fig.6 Brumell Fig.88



- 10D3 (Dubus Fig.10) Nov.1858 (Mar.1859 to Dec.1863) Rarity C
Codes seen: 2, 6, 12, 7, 8, 10, 11.
- 11D3 (Dubus Fig.11) Nov.1858 (Jan.1859 to Jan.1863) Rarity B
Codes seen: 6, 10, 1, 2, 8Mg, 12, B.
- 12D3 (Dubus Fig.12) Nov.1858 (Jan.1859 to Apr.1863) Rarity A
Codes seen: 6, 4, 8Nt, 8Mg, 2, 1, 3, 5, 12, 7, X, XA, 10.

Dubus Type 4 Westley Fig.7 Brumell Fig.89



- 13D4 (Dubus Fig.13) Oct.1859 (Feb.1860 to Sep.1863) Rarity C
Codes seen: 3, 12, 4, X, A6, A7, 6, 2.
- 14D4 (Dubus Fig.14) Oct.1859 (Nov.1859 to May 1862) Rarity E
Codes seen: 8Mg, X, 2, 5, XA.
- 15D4 (Dubus Fig.15) Apr.1860 (Apr.1860 to Jul.1862) Rarity B
Codes seen: 7, X, 8Mg, 1, 5, 4, 12.
- 16D4 (Dubus Fig.16) Apr.1860 (Nov.1859 to Jun.1862) Rarity C
Codes seen: X, 5, 3, 6, 7, 8Mg.
This occurs prior to its entry in the proof books.

Dubus Type 5 Westley Fig.8 Brumell Fig.90



- 16D5 (Dubus Fig.18) Dec.1862 (Feb.1861 to Feb.1868) Rarity D
Codes seen: X, 2, 7, 3.
This occurs prior to its entry in the proof books.

17D5 (Dubus Fig.17) Nov.1863 (Nov.1860 to Jun.1865)
Codes seen: X, 5, 2, 6, 3, 7, 8, 12.
This occurs prior to its entry in the proof books.

Rarity B

Dubus Type 6 Westley Fig.11 Brumell Fig.78

No circular date stamp



1D6

2D6

3D6

5D6

7D6

1D6	(Dubus Fig.19)	May 1865	(not recorded)	<u>Rarity H-(F)</u>
2D6	(Dubus Fig.20)	Dec.1862	(not recorded)	<u>Rarity H-(F)</u>
3D6	(Dubus Fig.21)	Jan.1863	(not recorded)	<u>Rarity H</u>
4D6	(No Dubus Fig.)	Jan.1863	(not recorded)	<u>Rarity H</u>
5D6	(Dubus Fig.23)	Feb.1863	(not recorded)	<u>Rarity H-(F)</u>
6D6	(No Dubus Fig.)	May 1865	(Jul.1863)	<u>Rarity H-(G)</u>
7D6	(Dubus Fig.25)	May 1863	(Jul.1863)	<u>Rarity H</u>
9D6	(No Dubus Fig.)	May 1865	(not recorded)	<u>Rarity H</u>

Dubus Type 7 Westley Fig.10 Brumell Fig.91



1D7

2D7

3D7

4D7

5D7

1D7	(Dubus Figs.27a,b)	Dec.1867	(Mar.1868 to Aug.1889)	<u>Rarity A</u>
2D7	(Dubus Fig.28)	Dec.1867	(Jan.1868 to Jan.1875)	<u>Rarity C</u>
3D7	(Dubus Fig.29)	Dec.1867	(Feb.1868 to Aug.1876)	<u>Rarity A</u>
4D7	(Dubus Figs.30a,b)	Apr.1867	(Nov.1867 to Apr.1876)	<u>Rarity B</u>
5D7	(Dubus Fig.30)	Apr.1867	(Jun.1867 to Jan.1872)	<u>Rarity C</u>



6D7



7D7



8D7



9D7.A



9D7.B

6D7	(Dubus Fig.32)	Dec.1864	(Sep.1866 to Jan.1867)	<u>Rarity F</u>
	Codes seen: X, 7.			
7D7	(Dubus Fig.33)	Dec.1864	(May 1866 to Feb.1867)	<u>Rarity F</u>
	Codes seen: 3, 5, X.			
8D7	(Dubus Fig.34)	Dec.1864	(May 1865 to Jul.1867)	<u>Rarity G</u>
	Codes seen: X, 5.			
9D7.A	(Dubus Fig.35a)	Feb.1863	(May 1863 to Apr.1876)	<u>Rarity A</u>
	Codes seen: 7, 5, X, 6, 12, 2, B, 4, 1.			
9D7.B	(Dubus Fig.35b,c)	Oct.1871	(Aug.1871 to May 1882)	<u>Rarity B</u>
	Codes seen: 7, 2, ZX, 3, 4, 5, 6, 2, X, 11.			



10D7



11D7



12D7



13D7 R



13D7F

10D7	(Dubus Fig.36)	May 1863	(Oct.1863 to Jul.1867)	<u>Rarity A</u>
	Codes seen: 5, X, 7, 3, 1, 6, 10, 11, B.			
11D7	(Dubus Fig.37)	May 1863	(Jul.1863 to Jul.1867)	<u>Rarity B</u>
	Codes seen: 7, X, 5, 6, 1, 2, 4.			
12D7	(Dubus Fig.38)	May 1863	(Feb.1864 to Feb.1869)	<u>Rarity C</u>
	Codes seen: 2, 3, 5, 7, 9, 6, 10, 12, X.			
13D7 R	(Dubus Figs.39a,c)	Dec.1864	(Mar.1864 to Jun.1881)	<u>Rarity C</u>
	Round topped three: occurs prior to its entry in the proof books			
	Codes seen: 2, 1, 3, 5, 12, AX, XA, 5A, 6A, X, ZX.			
13D7F	(Dubus Fig.39d)	not in proof books	(Jun.1875 to Mar.1896)	<u>Rarity E</u>
	Flat topped three			
	Codes seen: ZA, XA, X, 11A.			
14D7	(Dubus Fig.40a)	Jan.1863	(Feb.1863 to Sep.1872)	<u>Rarity A</u>
	Codes seen: X, 5, 7, 10, 2, 3, 6.			
15D7	(Dubus Fig.41)	Jan.1863	(Mar.1863 to Oct.1869)	<u>Rarity B</u>
	Codes seen: X, 5, 1, 4, 12, 2, 6, 7.			
18D7	(Dubus Fig.42)	Jun.1868	(Nov.1868 to Jun.1870)	<u>Rarity E</u>
	Codes seen: 1, 2, 3, 4, 5, 6, 11.			
19D7	(Dubus Fig.43)	Jun.1868	(Oct.1868 to Dec.1869)	<u>Rarity E</u>
	Codes seen: 1, 3, 4, 5.			



14D7



15D7



18D7



19D7



20D7



21D7



22D7

20D7 (Dubus Fig.44) Mar.1869 (Sep.1869 to Jun.1872)
Codes seen: X, ZZ, 7, 10.

Rarity D

21D7 (Dubus Fig.45) Mar.1869 (Apr.1869 to Nov.1883)
Codes seen: X, 2, 7, 12, D2, ZZ, ZX.

Rarity D

22D7 (Dubus Fig.46) Mar.1869 (Mar.1869 to Jul.1876)
Codes seen: X, 7, ZZ, 5, 12.

Rarity B



23D7R



23D7F



24D7

23D7R (Dubus Fig.47a) Dec.1869 (Feb.1870 to Feb.1873)
Round topped three.
Codes seen: ZZ, 7, X, 5.

Rarity D

23D7F (Dubus Fig.47b) Not in proof books (Aug.1872 to Mar.1876)
Flat topped three.
Codes seen: X, 5, 2.

Rarity E

24D7 (Dubus Figs.48a,b) Dec.1869 (Feb.1870 to Jul.1873)
Codes seen: X, 2, 3, 5, 7, 12, ZX.

Rarity C

Dubus Type 7 single

These obliterations do not have a circular date stamp. Numbers 7 to 14 have a full stop after N and W, unlike their equivalents with c.d.ss; they can, therefore, be identified on adhesive only.

Recorded used on registered letters.



14D7S

1D7S	(No Dubus Fig.)	Mar.1869	(not recorded)	<u>Rarity GPO</u>
2D7S	(No Dubus Fig.)	Mar.1869	(not recorded)	<u>Rarity H</u>
3D7S	(No Dubus Fig.)	Mar.1869	(not recorded)	<u>Rarity H</u>
4D7S	(No Dubus Fig.)	Mar.1869	(not recorded)	<u>Rarity GPO</u>
5D7S	(No Dubus Fig.)	Mar.1869	(not recorded)	<u>Rarity H</u>
6D7S	(No Dubus Fig.)	Mar.1869	(not recorded)	<u>Rarity GPO</u>
7D7S	(No Dubus Fig.)	Mar.1869	(not recorded)	<u>Rarity GPO</u>
8D7S	(No Dubus Fig.)	Sep.1870	(not recorded)	<u>Rarity H</u>
9D7S	(No Dubus Fig.)	Sep.1870	(Dec.1876)	<u>Rarity H</u>
10D7S	(No Dubus Fig.)	Sep.1870	(not recorded)	<u>Rarity GPO</u>
11D7S	(No Dubus Fig.)	Sep.1870	(Jul.1873)	<u>Rarity H</u>
12D7S	(No Dubus Fig.)	Sep.1870	(not recorded)	<u>Rarity GPO</u>
13D7S	(Dubus Fig.39c)	Sep.1870	(not recorded)	<u>Rarity H</u>
14D7S	(Dubus Fig.40b)	Sep.1870	(Jan.1872)	<u>Rarity H</u>

Dubus Type 8 Westley Fig.14 Brumell Fig.96



18D8

Type D8: as type D7 but with the addition of "too late" in the c.d.s. On adhesive only, both 17 and 18 can be distinguished from Type 7 by the full stop between the N and W.

17D8	(No Dubus Fig.)	Sep.1867	(not recorded)	<u>Rarity GPO</u>
	C.A in place of code.			
18D8	(Dubus Fig.50)	Sep.1867	(Apr.1868 to May 1870)	<u>Rarity G</u>
	C.B in place of code.			

Dubus Type 9 Westley Fig.13 Brumell Fig.79



1D9

1D9	(Dubus Fig.51)	Sep.1872	(not recorded)	<u>Rarity GPO</u>
2D9	(No Dubus Fig.)	Sep.1872	(not recorded)	<u>Rarity H</u>
3D9	(No Dubus Fig.)	Sep.1872	(not recorded)	<u>Rarity GPO</u>

Dubus Type 10 Westley Fig.16 Brumell Fig.82



AD10

AD10	(Dubus Fig.54)	Oct.1872	(not recorded)	<u>Rarity GPO</u>
BD10	(No Dubus Fig.)	Oct.1872	(not recorded)	<u>Rarity GPO</u>
CD10	(No Dubus Fig.)	Oct.1872	(not recorded)	<u>Rarity GPO</u>

Dubus Type 11 Westley Fig.17 Brumell Fig.94



20D11

20D11	(Dubus Fig.57)	May 1873	(not recorded)	<u>Rarity GPO</u>
-------	----------------	----------	----------------	-------------------

Dubus Type 12 Westley Fig.15 Brumell Fig.93

This is a very variable group; it has been assumed each obliterator was given its own code prefix. There are, however, some recuts of cancellations which kept their original letters.



1D12

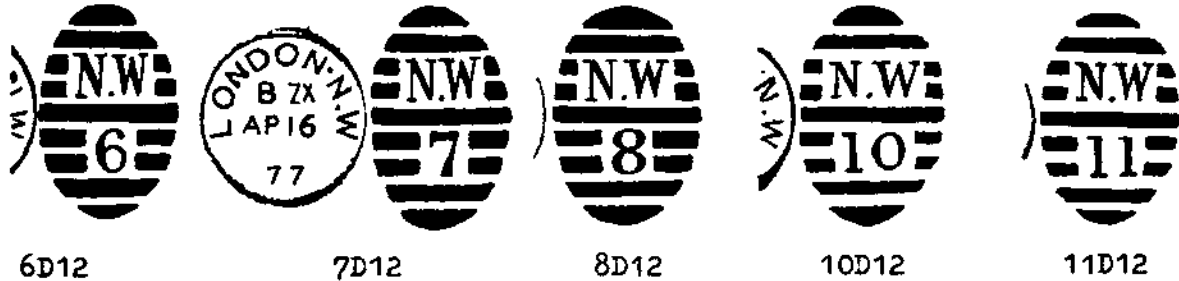
2D12

3D12

4D12

5D12

- | | | |
|--------|--|-----------------|
| 1D12.A | (Dubus Fig.84) Dec.1889 (Jan.1890 to Apr.1891) | <u>Rarity C</u> |
| | Code prefix A | |
| | Codes seen: 5, 6, 10, X, 1, 4, 7, 11, 12. | |
| 1D12.B | (No Dubus Fig.) Not in proof books (Dec.1897) | <u>Rarity H</u> |
| | Code prefix B | |
| | Code seen: X. | |
| 1D12.N | (Dubus Fig.78) Jun.1882 (Sep.1874 to Jun.1887) | <u>Rarity C</u> |
| | No code prefix | |
| | Codes seen: 7, ZX, 6, 1, 3, 11, X. | |
| 1D12.T | (Dubus Fig.84) Not in proof books (Jun.1908 to Nov.1922) | <u>Rarity G</u> |
| | Time in full | |
| | Times seen: 7.30 PM, 7.45 PM. | |
| 2D12 | (Dubus Fig.79) Jun.1882 (Aug.1882 to Dec.1891) | <u>Rarity C</u> |
| | No code prefix | |
| | Codes seen: 7, X, 3, 4, 5, 6, 12, 1. | |
| 3D12.C | (No Dubus Fig.) Not in proof books (Mar.1879 to Sep.1887) | <u>Rarity G</u> |
| | Code prefix C | |
| | Codes seen: 1, Z. | |
| 3D12.N | (Dubus Figs.80 and 85) Jun.1882 (Feb.1883 to Dec.1897) | <u>Rarity C</u> |
| | Dubus Fig.85 is not in the proof books; Fig.80 in Jun.1882 | |
| | No code prefix | |
| | Codes seen: 2, 3, 5, 7, ZX, X, ZZ. | |
| 4D12.N | (Dubus Fig.81) Jun.1882 (Feb.1883 to Dec.1891) | <u>Rarity A</u> |
| | No code prefix | |
| | Codes seen: 6, 1, 5, ZX, X, 2, Z, 3, 4, 7. | |
| 4D12.T | (Dubus Fig.86) Not in proof books (May 1896 to Mar.1897) | <u>Rarity E</u> |
| | Time in full | |
| | Times seen: 2.30 AM, 10.15 AM, 5.15 PM, 10.30 PM. | |
| 5D12.N | (Dubus Fig.82) Jun.1882 (Jul.1883 to Aug.1898) | <u>Rarity C</u> |
| | No code prefix | |
| | Codes seen: X, 2, ZZ, 7. | |
| 5D12.T | (No Dubus Fig.) Not in proof books (Feb.1904) | <u>Rarity H</u> |
| | Time in full | |
| | Time seen: 8.30 PM. | |



- 6D12 (Dubus Figs.58 and 64) May 1873 (Feb.1874 to Aug.1891) Rarity A
Dubus Fig.58 in proof books May 1873; Fig.64 in Oct.1887
Code prefix A
Codes seen: X, 1, 4, 7, ZX, 5, 10, 12, 6, 2.
- 6D12.B (No Dubus Fig.) Not in proof books (May 1878 to Jun.1885) Rarity F
Code prefix B
Codes seen: 6, 5, 2.
- 7D12.B (Dubus Fig.59) May 1873 (Mar.1874 to Jun.1885) Rarity B
Code prefix B
Codes seen: X, ZX, 7, Z, 2, 3, 5, 10, 12.
- 7D12.A (No Dubus Fig.) Oct.1887 (Nov.1891 to Jan.1892) Rarity G
Code prefix A.
Codes seen: X, 7.
- 8D12.C (Dubus Figs. 60 and 66) May 1873 (Feb.1874 to Aug.1889) Rarity A
Fig.60 in proof books May 1873
Code prefix C
Codes seen: X, 1, 3, 6, 7, ZX, Z, 2X, 2, 12.
- 8D12.B (No Dubus Fig.) Not in proof books (Nov.1891 to Dec.1897) Rarity G
Code prefix B
Codes seen: X, Z.
- 8D12.A (No Dubus Fig.) Not in proof books (Feb.1886) Rarity H
Code prefix A
Code seen: Z.
- 10D12.D (Dubus Fig.61) May 1873 (Jun.1873 to Mar.1880) Rarity C
Code prefix D
Codes seen: X, 3, 4, 5, 7, 10, ZX, 2.
- 10D12.L (Dubus Fig.67) Not in proof books (Nov.1880 to Feb.1882) Rarity G
Code Suffix L
Code seen: 7.
- 10D12.S (Dubus Fig.67) Not in proof books (May 1890 to Aug.1890) Rarity G
Code prefix S
Code seen: X.
- 10D12.T (Dubus Fig.67) Not in proof books (Jul.1901 to Apr.1904) Rarity F
Time in full
Times seen: 2.30 AM, 12.15 AM, 8.30 PM.
- 11D12.E (Dubus Fig.62) May 1873 (Jun.1873 to Jan.1882) Rarity C
Code Prefix E
Codes seen: X, 1, 4, 6, 7, 3.
- 11D12.T (Dubus Fig.68) Not in proof books (Mar.1902 to Nov.1911) Rarity C
Time in full
Times seen: 12.15 AM, 9.45 PM, 5 PM.



12D12



13D12



14D12



15D12



16D12

- 12D12.F (Dubus Fig.63) May 1873 (Jun.1873 to Apr.1881) Rarity C
Code prefix F.
Codes seen: 3, ZX, 2X, X, 4, 5, 7.
- 12D12.R (No Dubus Fig.) Not in proof books (Mar.1890) Rarity H
Code prefix R.
Code seen: ZZ.
- 12D12.T (Dubus Fig.69) Not in proof books (Oct.1901 to Dec.1905) Rarity E
Time in full
Times seen: 12.15 AM, 6 PM, 9.45 PM.
- 13D12.K (No Dubus Fig.) Not in proof books (May 1888) Rarity H
Code prefix K
Code seen: X.
- 13D12.T (Dubus Fig.87b) Not in proof books (Jun.1900 to Feb.1911) Rarity C
Time in full
Times seen: 12.15 AM, 6 PM, 2.30 AM.
- 13D12.W (Dubus Fig.87a) Oct.1883 (Mar.1884 to Oct.1891) Rarity G
Code prefix W
Codes seen: 6, 2.
- 14D12.G (Dubus Fig.70) Jul.1874 (Jan.1875 to Jun.1887) Rarity B
Code prefix G
Codes seen: 5, 7, X, 2, 3, 11.
- 14D12.T (Dubus Fig.74) Not in proof books (Mar.1899 to Apr.1907) Rarity F
Time in full
Times seen: 2.30 AM, 12.15 AM, 6 PM, 9.45 PM.
- 15D12.A (Dubus Fig.75) Oct.1887 (Feb.1889) Rarity H
Code prefix A
Code seen: X.
- 15D12.H (Dubus Fig.71) Jul.1874 (Jul.1875 to Apr.1889) Rarity A
Code prefix H
Codes seen: 7, 5, X, 1, 2.
- 15D12.T (Dubus Fig.75) Not in proof books (Jul.1902 to Dec.1908) Rarity E
Time in full
Times seen: 2 AM, 12.15 AM, 7.30 PM
- 16D12.J (Dubus Figs.72 and 76a) Oct.1874 (Oct.1874 to Feb.1886) Rarity B
Code prefix J
Codes seen: 7, 12, 2, 5, 3, X, ZX.
- 16D12.C (No Dubus Fig.) Dec.1887 (not recorded) Rarity GPO
Code prefix C
- 16D12.F (Dubus Fig.76a) Not in proof books (Apr.1890 to Dec.1890) Rarity G
Code prefix F
Codes seen: ZZ, 7.
- 16D12.2 (Dubus Fig.76a) Not in proof books (Apr.1890) Rarity H
Code prefix 2
Code seen: ZZ.

- 16D12.N (Dubus Fig.76a) Not in proof books (Jun.1898) Rarity H
 No code prefix
 Code seen: X.
- 16D12.T (Dubus Fig.76a) Not in proof books (May.1900 to Nov.1903) Rarity F
 Time in full
 Times seen: 2.30 AM, 4.15 AM.



17D12



18D12



19D12



22D12

- 17D12.K (Dubus Figs.73 and 77) Jul.1874 (Nov.1874 to Jun.1882) Rarity A
 Code prefix K
 Codes seen: X, 7, 3, 6, 2, 4, 12, ZZ, ZX.
- 18D12.N (Dubus Fig.83) Jun.1882 (Sep.1882 to Feb.1891) Rarity C
 No code prefix
 Codes seen: X, 7, 2, 3, 5.
- 18D12.T (No Dubus Fig.) Not in proof books (Apr.1898 to Nov.1906) Rarity G
 Time in full
 Times seen: 8.30 PM.
- 19D12.T (Dubus Fig.88) Not in proof books (May 1898 to Dec.1898) Rarity G
 Time in full
 Times seen: 2.15 PM, 5.45 PM, 11.15 AM.
- 22D12.N (Dubus Fig.89) Not in proof books (Mar.1886 to 1888) Rarity G
 Codes illegible
- 22D12.T (Dubus Fig.89) Not in proof books (Jun.1898 to Apr.1904) Rarity E
 Time in full
 Times seen: 5.30 PM, 6.45 PM, 5.45PM, 10.30 PM.

Dubus Type 12 Single

These oblitters do not have a circular date stamp



4D12S

- 4D12S (Dubus Fig.90) Not in proof books (not recorded) Rarity H
- 5D12S (No Dubus Fig.) Not in proof books (not recorded) Rarity H
- 58D12S (No Dubus Fig.) Mar.1890 (not recorded) Rarity H

End of North Western District

SOUTHERN DISTRICT

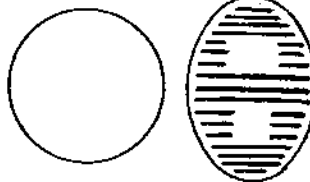
by J. C. PARMENTER

The Southern District Office was first opened in Westminster Road, Lambeth and the first obliterations were sent out on 1 September 1858. The Southern District was abolished on 1 April 1868. The Town Office and the Suburban Districts of Camberwell, Dulwich, Norwood and South Norwood were transferred to the South Eastern District. Carshalton, Sutton and Mitcham were transferred to the Provincial Area, the rest went to South West District.

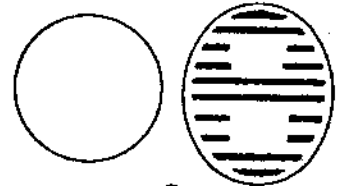
The following cancellations are all the types of barred numerals in use in the Town Office - the numbers beneath each one are the Dubus type numbers by which the catalogue is arranged.



1



2



3



4



5



6

SOUTHERN DISTRICT

Dubus Type 1 Westley Fig.4 Brumell Fig.75

No circular date stamp



1D1



3D1



4D1



5D1



8D1

1D1	(Dubus Fig.1)	Sep.1858	(not recorded)	<u>Rarity H</u>
2D1	(Dubus Fig.2)	Sep.1858	(not recorded)	<u>Rarity H-(G)</u>
3D1	(Dubus Fig.3)	Sep.1858	(Mar.1859)	<u>Rarity H-(F)</u>
4D1	(Dubus Fig.4)	Sep.1858	(Dec.1859 to Jul.1860)	<u>Rarity G</u>
5D1	(Dubus Fig.5)	Sep.1858	(Sep.1860 to Oct.1860)	<u>Rarity G</u>
6D1	(Dubus Fig.6)	Sep.1858	(not recorded)	<u>Rarity H</u>
7D1	(Dubus Fig.7)	Sep.1858	(not recorded)	<u>Rarity H</u>
8D1	(Dubus Fig.8)	Sep.1858	(Jan.1859)	<u>Rarity H</u>
9D1	(Dubus Fig.9)	Sep.1858	(not recorded)	<u>Rarity H</u>
10D1	(Dubus Fig.10)	Sep.1858	(not recorded)	<u>Rarity H</u>
11D1	(Dubus Fig.11)	Sep.1858	(not recorded)	<u>Rarity H</u>
12D1	(Dubus Fig.12)	Sep.1858	(not recorded)	<u>Rarity H</u>
13D1	(Dubus Fig.13)	Sep.1858	(not recorded)	<u>Rarity H</u>
14D1	(Dubus Fig.14)	Sep.1858	(not recorded)	<u>Rarity H</u>

Dubus Type 2 Westley Fig.6 Brumell Fig.88



15D2



16D2



17D2



18D2



19D2



20D2

15D2	(Dubus Fig.15)	Sep.1858	(Oct.1858 to Feb.1862)	<u>Rarity C</u>
	Codes seen: 6, 8Mg, 3, 5, 10, 12, X.			
16D2	(Dubus Fig.16)	Sep.1858	(Apr.1859 to Jul.1862)	<u>Rarity A</u>
	Codes seen: 5, 7, 8Nt, 3, 12, 1, 2, 4, 10, X.			
17D2	(Dubus Fig.17)	Sep.1858	(Mar.1859 to Sep.1862)	<u>Rarity B</u>
	Codes seen: X, 6, 2, 3, 4, 8Nt, 10, 12.			
18D2	(Dubus Figs.18a,b)	Sep.1858	(Jul.1859 to Mar.1862)	<u>Rarity B</u>
	Codes seen: X, 12, 3, 2, 4, 6, 8Mg, XA, Z.			

- 19D2 (Dubus Fig.19) Sep.1858 (Dec.1858 to Dec.1862) Rarity B
Codes seen: 7, 12, 5, 3, X, 2, 8Nt.
- 20D2 (Dubus Fig.20) Sep.1858 (Dec.1858 to Dec.1862) Rarity D
Codes seen: 5, 12, 3, 6, B, X.

Dubus Type 3 Westley Fig.8 Brumell Fig.90



16D3 17D3 21D3 22D3

- 16D3 (Dubus Fig.22) Dec.1862 (Jan.1863 to Aug.1867) Rarity A
Codes seen: 7, X, 12, 3, 4, 11, 5, Z, 4, 2.
- 17D3 (Dubus Fig.23) Dec.1862 (Feb.1863 to Mar.1868) Rarity A
Codes seen: X, 6, 1, 12, 11, 2, 4, 7, 9, 10, Z.
- 21D3 (Dubus Fig.21) Sep.1860 (Dec.1860 to Jul.1863) Rarity E
Codes seen: X, 3, 12.
- 22D3 (Dubus Fig.24) Dec.1861 (Feb.1862 to Nov.1867) Rarity C
Codes seen: 6, X, 7, 5, B.

Dubus Type 4 Westley Fig.12 Brumell Fig.92



15D4 18D4 19D4 20D4 23D4

- 15D4 (Dubus Figs.25a,b) Jan.1863 (May 1863 to Jan.1868) Rarity A
Codes seen: X, 7, 3, 1, 12, 2, 5, 6, 10.
- 18D4 (Dubus Fig.26) Jan.1863 (May 1863 to Dec.1867) Rarity A
Codes seen: X, 7, Z, 5, 11, 12, 3, B, 4, 2, 6, 9.
- 19D4 (Dubus Fig.27) Jan.1863 (Apr.1863 to Apr.1867) Rarity C
Codes seen: X, 2, 4, 7, 12, 6, B, XA.
- 20D4 (Dubus Figs.28a,b) Jan.1863 (Mar.1863 to Mar.1868) Rarity A
Codes seen: X, 5, 3, 12, 4, 6, 7, 11, 1, Z.
- 22D4 (Dubus Fig.29) Jul.1866 (Oct.1867 to Mar.1868) Rarity F
Codes seen: 5, 7.

Dubus Type 5 Westley Fig.14 Brumell Fig.96



24D5

24D5	(Dubus Fig.30) Oct.1867 (Nov.1867)	<u>Rarity H</u>
	C.A. in place of code.	
25D5	(Dubus does not illustrate) Oct.1867 (not recorded)	<u>Rarity GPO</u>

Dubus Type 6 Westley Fig.11 Brumell Fig.78

No circular date stamp



1D6

3D6

8D6

9D6

1D6	(Dubus Fig.32) Feb.1863 (not recorded)	<u>Rarity H-(G)</u>
2D6	(Dubus does not illustrate) Feb.1863 (Sep.1864)	<u>Rarity H-(F)</u>
3D6	(Dubus Fig.34) Feb.1863 (1864)	<u>Rarity H-(G)</u>
4D6	(Dubus does not illustrate) Feb.1863 (not recorded)	<u>Rarity H</u>
5D6	(Dubus does not illustrate) Mar.1863 (Aug.1865)	<u>Rarity H</u>
6D6	(Dubus does not illustrate) Mar.1863 (not recorded)	<u>Rarity H</u>
7D6	(Dubus does not illustrate) Mar.1863 (not recorded)	<u>Rarity H</u>
8D6	(Dubus Fig.39) Mar.1863 (not recorded)	<u>Rarity H-(G)</u>
9D6	(Dubus Fig.40) Mar.1863 (not recorded)	<u>Rarity H-(G)</u>

The Southern District Office was closed on 1 March 1868 and the District split between South Eastern and South Western.

End of Southern District.

SOUTH EASTERN DISTRICT

by J. C. PARMENTER

The South Eastern District Office was first opened at 170 High Street, Southwark and obliterations were sent out on 24 March 1857. The Suburban Offices started to sort and cancel their own mail in the 1870s; the obliterations used in these offices are the subject of Section K.

The following cancellations are all the types of barred numerals used in the Northern District Office - the numbers beneath each one are the Dubus type numbers by which the catalogue is arranged.



1



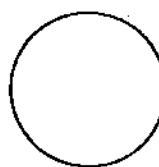
1



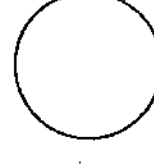
2



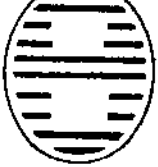
3



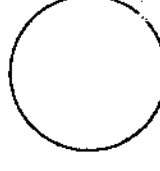
4



5



6



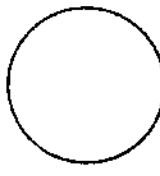
7



8



9



10



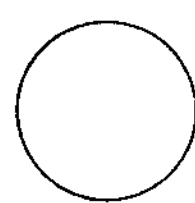
11



12



13



14



SOUTH EASTERN DISTRICT

Dubus Type 1A Westley Fig.1 Brumell Fig.76



1D1A



2D1A



3D1A



4D1A



5D1A



6D1A

1D1A	(Dubus Fig.1)	Mar.1857	(Jun.1857 to Jan.1859)	<u>Rarity G</u>
2D1A	(Dubus Fig.2)	Mar.1857	(Jun.1857 to Aug.1857)	<u>Rarity F</u>
3D1A	(Dubus Fig.3)	Mar.1857	(Apr.1857 to Oct.1858)	<u>Rarity G</u>
4D1A	(Dubus Fig.4)	Mar.1857	(Sep.1857)	<u>Rarity H-(F)</u>
5D1A	(Dubus Fig.5)	Mar.1857	(Oct.1857 to May 1859)	<u>Rarity G</u>
6D1A	(Dubus Fig.6)	Mar.1857	(Aug.1857 to Jun.1858)	<u>Rarity G</u>

Dubus Type 1B Westley Fig.4 Brumell Fig.75



3D1B

1D1B	(Dubus does not illustrate)	Aug.1863	(not recorded)	<u>Rarity H</u>
3D1B	(Dubus Fig.8)	Jan.1860	(Sep.1868)	<u>Rarity H</u>
5D1B	(Dubus does not illustrate)	Jan.1860	(Nov.1862)	<u>Rarity H</u>
6D1B	(Dubus does not illustrate)	Jun.1862	(not recorded)	<u>Rarity H</u>

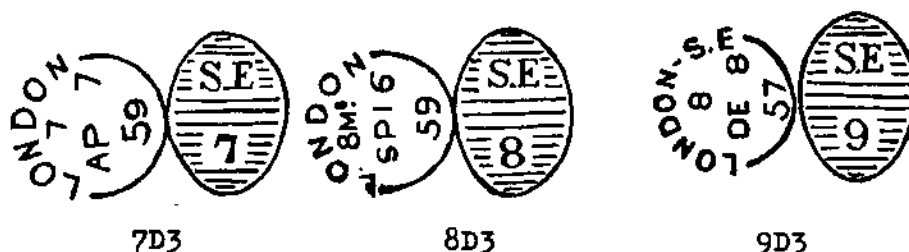
Dubus Type 2 Westley Fig.3 Brumell Fig.85



10D2A

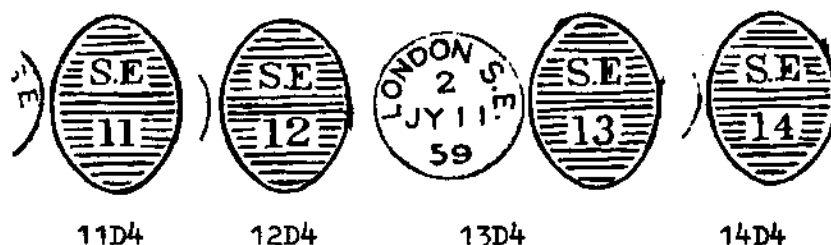
10D2A	(Dubus Fig.11a)	Mar.1857	(Oct.1857 to Sep.1861)	<u>Rarity D</u>
	Codes seen:	4, 8, 8Mg, 8Nt, 5, 6.		
10D2B	(Dubus Fig.11b)	Oct.1859	(Jun.1860 to Sep.1862)	<u>Rarity E</u>
	This type has no full stop between S and E			
	Codes seen:	X, 3, 4, 5.		

Dubus Type 3 Westley Fig.2 Brumell Fig.84 Traill & Holland Type VIa & b



- | | | |
|-----|---|-----------------|
| 7D3 | (Dubus Fig.12) Mar.1857 (Apr.1857 to Oct.1862)
Codes seen: 2, 6, 5, 10, 12, 3, 8Mg, 8, X, 1, XA, 8Nt, 7. | <u>Rarity A</u> |
| 8D3 | (Dubus Fig.13) Mar.1857 (Jun.1857 to Nov.1862)
Codes seen: 8Nt, 12, 2, 8Mg, X, 6, 7, 8, 1, 4, 5, 10, 3. | <u>Rarity A</u> |
| 9D3 | (Dubus Figs.14a,b) Mar.1857 (Nov.1857 to Mar.1862)
Codes seen: X, 7, 8Mg, 6, 3, 12, 5, 1, 2, 11, 8, 8Nt. | <u>Rarity A</u> |

Dubus Type 4 Westley Fig.6 Brumell Fig.88



- | | | |
|------|--|-----------------|
| 11D4 | (Dubus Fig.15) Sep.1858 (Mar.1859 to Feb.1862)
Codes seen: 10, 12, 1, 4, 6, 8, X, XA. | <u>Rarity C</u> |
| 12D4 | (Dubus Fig.16) Sep.1858 (Dec.1858 to Sep.1862)
Codes seen: 3, 8Mg, 2, X, 12, 5, 8. | <u>Rarity B</u> |
| 13D4 | (Dubus Fig.17) Sep.1858 (Oct.1858 to Nov.1861)
Codes seen: X, 1, 2, 5, 8, 10, 8Nt. | <u>Rarity C</u> |
| 14D4 | (Dubus Fig.18) Sep.1858 (Dec.1858 to Jan.1863)
Codes seen: X, 1, 10, 8Nt. | <u>Rarity D</u> |

Dubus Type 5 Westley Fig.8 Brumell Fig.90



- | | | |
|------|---|-----------------|
| 7D5A | (Dubus Fig.19a) Nov.1862 (Feb.1863 to Jun.1881)
Dot between S and E
Codes seen: X, 12, 6, 1, 2, 3, 4, 5, 7, 10, 11. | <u>Rarity A</u> |
| 7D5B | (Dubus Fig.19b) Not in proof books (Dec.1872 to Jan.1876)
No dot between S and E
Codes seen: 6, Z, 2B, X. | <u>Rarity F</u> |

- 8D5A (Dubus Fig.20a) Nov.1862 (Jan.1863 to Mar.1872) Rarity A
 Dot between S and E
 Codes seen: 3, 6, 1, 7, 12, 5, X, 2, 4, 11, Z.
- 8D5B (Dubus Figs.20b,c) Jan.1867 (Sep.1869 to Jul.1877) Rarity C
 No dot between S and E
 Codes seen: Z, 7, 12, 1, 2, 4, 11.
- 9D5 (Dubus Figs.21a,b) Nov.1862 (Feb.1863 to Mar.1879) Rarity A
 Codes seen: 7, 1, 3, 2, 5, 6, 12, X, 4, 10.



10D5



13D5



14D5

- 10D5 (Dubus Figs.22a,b) Nov.1862 (Dec.1863 to Sep.1877) Rarity A
 Codes seen: X, 6, 7, 11, Z, 3, 5, 10, ZX, 2.
- 13D5 (Dubus Figs.23a,b,c) Feb.1863 (Mar.1864 to Aug.1878) Rarity A
 Codes seen: X, 5, 6, 7, 3, 2, ZZ, 10, 4, 12, ZX.
- 14D5A (Dubus Figs.24a,b) Feb.1863 (Nov.1864 to Sep.1874) Rarity C
 Dot between S and E
 Codes seen: X, ZZ, 3, 6.
- 14D5B (Dubus Figs.24c,d) Not in proof books (Nov.1871 to Feb.1881) Rarity B
 No dot between the S and E
 Codes seen: 5, ZX, ZZ, X, 12.
- 15D5 (Dubus Fig.25) Jul.1860 (Apr.1861 to Oct.1874) Rarity C
 Codes seen: X, 3, 6, B, none.



15D5



16D5



17D5

- 16D5 (Dubus Fig.26) Mar.1862 (Sep.1862 to Dec.1863) Rarity F
 Codes seen: 7, X, 4.
- 17D5 (Dubus 27a,b) Mar.1862 (Jun.1862 to Mar.1878) Rarity A
 Codes seen: X, 5, XA, ZZ, 1, 4, 7.

Dubus Type 6 Westley Fig.11 Brumell Fig.78

- 1D6 (Dubus does not illustrate) Apr.1863 (not recorded) Rarity H-(G)
- 3D6 (Dubus does not illustrate) Apr.1863 (not recorded) Rarity H



4D6

4D6	(Dubus Fig.30) Jun.1862 (not recorded)	<u>Rarity H-(G)</u>
5D6	(Dubus does not illustrate) Mar.1863 (not recorded)	<u>Rarity H-(G)</u>
6D6	(Dubus does not illustrate) Mar.1863 (not recorded)	<u>Rarity H</u>

Dubus Type 7 Westley Fig.12 Brumell Fig.92



7D7



11D7A



11D7B



11D7C

7D7	(Dubus Fig.33) Apr.1871 (Jul.1871 to Apr.1876) Codes seen: X, 5, ZX, 6.	<u>Rarity D</u>
11D7A	(Dubus Figs.34a,b and 91a) Dec.1862 (Mar.1863 to May 1877) Two bars at top and base - maybe trace of a third bar Codes seen: X, 3, 5, 7, 1, 2, 6, Z, Z7, ZX, 2X.	<u>Rarity A</u>
11D7B	(Dubus Fig.34c) Not in proof books (Dec.1878) Cut in bars at top Code seen: 5	<u>Rarity H-(F)</u>
11D7C	(Dubus Fig.34d) Not in proof books (Dec.1877 to Dec.1878) Clearly three bars at top and base - no overlap in dates of use Codes seen: 3, 12, ZX, X, 5.	<u>Rarity E</u>



12D7A



12D7B



15D7

12D7A	(Dubus Figs.35a,c,d and 92a) Dec.1862 (Jan.1863 to Feb.1878) Can have only two bars at top and base as 11D7A Codes seen: X, 3, 7, 5, 6, 4, 11, 12, Z.	<u>Rarity A</u>
12D7B	(Dubus Figs.35b,e) Not in proof books (Jul.1874 to Dec.1877) May have three, two or only one bar at the base of the Codes seen: X, 7, 12, 3.	<u>Rarity F</u> obliterator
15D7	(Dubus Fig.36a,b) Oct.1876 (Oct.1877 to Jan.1896) Codes seen: 5, ZX, 1, 3, X, XZ.	<u>Rarity C</u>



16D7A



16D7B



16D7C



18D7

- 16D7A (Dubus Fig.37a) Feb.1864 (Jul.1866 to Apr.1874) Rarity B
Codes seen: X, 3, 5, ZZ, 6, ZX.
- 16D7B (Dubus Fig.37b) Not in proof books (Nov.1871 to Jul.1873) Rarity G
Both examples seen had illegible codes!
- 16D7C (Dubus Fig.37c) Not in proof books (Jul.1877 to Jan.1878) Rarity F
Code seen: X.
- 18D7 (Dubus Fig.38a,b,c) Feb.1864 (Jul.1864 to Dec.1887) Rarity C
Codes seen: X, ZZ, 7.



19D7



20D7



21D7



22D7



23D7

- 19D7 (Dubus Fig.39) Oct.1869 (May 1867 to May 1885) Rarity C
Codes seen: X, ZZ, 1.
- 20D7 (Dubus Fig.40) Not in proof books (Oct.1871 to Jun.1889) Rarity F
Codes seen: X, 3, ZZ.
- 21D7 (Dubus Fig.41) Mar.1868 (Dec.1868 to Feb.1872) Rarity C
Codes seen: X, 3, 7, 5, 12, ZZ, 7, 29.
- 22D7 (Dubus Fig.42) Mar.1868 (Oct.1868 to Feb.1870) Rarity C
Codes seen: X, 3.
- 23D7 (Dubus Fig.43) Nov.1870 (Mar.1871 to Aug.1874) Rarity D
Codes seen: X, ZZ, 7.



24D7

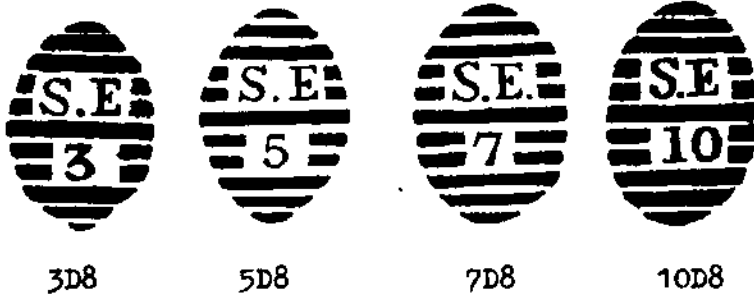


25D7

- 24D7 (Dubus Figs.44a,b) Nov.1870 (Feb.1872 to Aug.1881) Rarity C
Codes seen: X, 12, ZZ.
- 25D7 (Dubus Fig.45) Nov.1870 (Apr.1872 to Mar.1880) Rarity F
Codes seen: X, 2, 7.

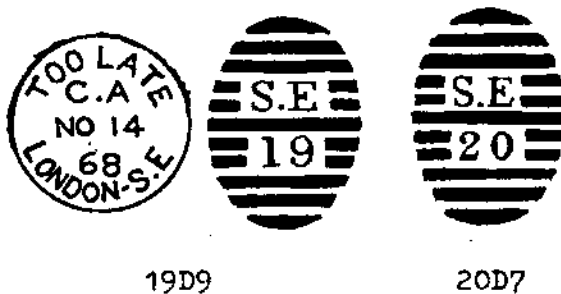
Dubus Type 8 Brumell Fig.81

Same cancellations as Type 7, except no c.d.s.



1D8	(Dubus does not illustrate)	Oct.1869	(not recorded)	<u>Rarity GPO</u>
2D8	(Dubus does not illustrate)	Oct.1869	(not recorded)	<u>Rarity GPO</u>
3D8	(Dubus Fig.48)	Oct.1869	(not recorded)	<u>Rarity H</u>
4D8	(Dubus does not illustrate)	Oct.1869	(not recorded)	<u>Rarity GPO</u>
5D8	(Dubus Fig.50)	Oct.1869	(not recorded)	<u>Rarity H</u>
7D8	(Dubus Fig.51)	Sep.1870	(not recorded)	<u>Rarity H</u>
8D8	(Dubus does not illustrate)	Sep.1870	(not recorded)	<u>Rarity H</u>
9D8	(Dubus does not illustrate)	Sep.1870	(not recorded)	<u>Rarity H</u>
10D8	(Dubus Fig.54)	Sep.1870	(not recorded)	<u>Rarity H</u>
11D8	(Dubus does not illustrate)	Sep.1870	(not recorded)	<u>Rarity GPO</u>
12D8	(Dubus does not illustrate)	Sep.1870	(not recorded)	<u>Rarity GPO</u>

Dubus Type 9 Westley Fig.14 Brumell Fig.96



19D9	(Dubus Fig.57)	Oct.1857	(Nov.1868 to Jul.1872)	<u>Rarity G</u>
	C.A in place of code.			
20D9	(Dubus Fig.58)	Oct.1857	(Mar.1869 to Jun.1872)	<u>Rarity F</u>
	C.B in place of code.			

Dubus Type 10 Westley Fig.10 Brumell Fig.91



15D10

15D10 (Dubus Fig.59) Not in proof books (Aug.1867 to Dec.1871) Rarity F
Code seen: DX.

Dubus Type 11

No circular date stamp



3D11

4D11

5D11

1D11	(Dubus does not illustrate)	Oct.1868	(not recorded)	<u>Rarity H</u>
2D11	(Dubus does not illustrate)	Oct.1868	(not recorded)	<u>Rarity H-(G)</u>
3D11	(Dubus Fig.62)	Oct.1868	(not recorded)	<u>Rarity GPO</u>
4D11	(Dubus Fig.63)	Oct.1868	(1872)	<u>Rarity H-(G)</u>
5D11	(Dubus Fig.64)	Oct.1868	(not recorded)	<u>Rarity H-(G)</u>
6D11	(Dubus does not illustrate)	Oct.1868	(not recorded)	<u>Rarity H-(G)</u>

Dubus Type 12 Westley Fig.13 Brumell Fig.79

No circular date stamp

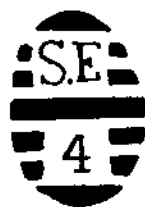


1D12

2D12

3D12

1D12	(Dubus Fig.66)	Apr.1872	(Feb.1879)	<u>Rarity H</u>
2D12	(Dubus Figs.67a,b)	Apr.1872	(Aug.1872 to Dec.1874)	<u>Rarity G</u>
3D12	(Dubus Fig.68)	Apr.1872	(not recorded)	<u>Rarity H</u>



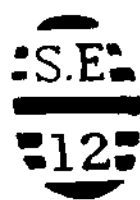
4D12



5D12



6D12



12D12

4D12	(Dubus Fig.69)	Apr.1872	(not recorded)	<u>Rarity H</u>
5D12	(Dubus Fig.70)	Apr.1872	(not recorded)	<u>Rarity H</u>
6D12	(Dubus Fig.71)	Apr.1872	(not recorded)	<u>Rarity H</u>
7D12	(Dubus does not illustrate)	Apr.1872	(not recorded)	<u>Rarity H</u>
8D12	(Dubus does not illustrate)	Apr.1872	(not recorded)	<u>Rarity GPO</u>
9D12	(Dubus does not illustrate)	Apr.1872	(not recorded)	<u>Rarity GPO</u>
10D12	(Dubus does not illustrate)	Apr.1872	(not recorded)	<u>Rarity H</u>
11D12	(Dubus does not illustrate)	Apr.1872	(not recorded)	<u>Rarity GPO</u>
12D12	(Dubus Fig.77)	Apr.1872	(not recorded)	<u>Rarity H-(G)</u>

Dubus Type 13 Westley Fig.16 Brumell Fig.82

No circular date stamp



AD13

AD13	(Dubus Fig.78)	Oct.1872	(not recorded)	<u>Rarity H</u>
BD13	(Dubus does not illustrate)	Oct.1872	(not recorded)	<u>Rarity GPO</u>
CD13	(Dubus does not illustrate)	Oct.1872	(not recorded)	<u>Rarity GPO</u>

Dubus Type 14 Westley Fig.15 Brumell Fig.93

Of the many recuts figured by Dubus those which appear in the proof books are listed.



1D14



2D14



3D14



4D14

- 1D14 (Dubus Fig.81a,b,c,d,e) Dec.1874 (Apr.1875 to Oct.1885) Rarity A
Fig.81a in proof books Dec.1874; Fig.81e Dec.1881
Codes seen: 3, 5, X, 10, 2, 4, 6, 12, ZX, Z.
- 2D14 (Dubus Figs.82a,b,c,d) Dec.1874 (Feb.1875 to Jul.1885) Rarity A
Fig.82a in proof books Dec.1874
Codes seen: X, 1, 12, 10, 3, ZX, 2, 4, 5, 11, CZX, XZ, C5.
- 3D14 (Dubus Figs.83a,b,c,d,e) Dec.1874 (Feb.1875 to Dec.1886) Rarity A
Fig.83a in proof books Dec.1874; 83d May 1884
Codes seen: X, ZX, 3, 10, 6, 12, 1, 4, 5, 2.
- 4D14 (Dubus Figs.84a,b,c,d,e,f) Dec.1874 (Mar.1875 to Jan.1886) Rarity A
Fig.84a in proof books Dec.1874
Codes seen: X, 3, 12, 2, ZX, 5.
- 5D14 (Dubus Figs.85a,b) Nov.1873 (Mar.1875 to Nov.1886) Rarity A
Fig.85a in proof books Nov.1873; 85b May 1884
Codes seen: 3, 12, 5, 2, 4, X, 1, 6, 10.
- 6D14 (Dubus Figs.86a,b) Nov.1873 (Sep.1874 to Feb.1890) Rarity B
Fig.86a in proof books Nov.1873
Codes seen: X, 6, 3, 1, 4, 5, ZX, 12.



5D14



6D14



7D14



8D14



9D14

- 7D14 (Dubus Fig.87) Sep.1879 (Jul.1879 to Nov.1892) Rarity D
Codes seen: X, 2, 7, ZB, WX.
- 8D14 (Dubus Figs.88a,b) Sep.1879 (Oct.1879 to Apr.1890) Rarity C
Fig.88a in proof books Sep.1879
Codes seen: A7, A2.
- 9D14 (Dubus Figs.89a,b) May 1879 (Sep.1879 to May 1890) Rarity D
Fig.89a in proof books May 1879
Codes seen: B7, D7, C7.



10D14



11D14



12D14



13D14



14D14

- 10D14C (Dubus Fig.90) May 1879 (Jul.1879 to Jan.1895) Rarity D
Time in code
Codes seen: CZ, C7, C4, OZ, E7.
- 10D14T (Dubus Fig.90) Not in proof books (Aug.1896 to Feb.1897) Rarity G
Time in full
Times seen: 12.15 AM, 7.30 PM, 7.45 PM.

11D14	(Dubus Fig.91b) Mar.1879 (Jul.1879 to Apr.1886) Dubus Fig.91a has been entered under 11D7. The slanting serifs on the E are diagnostic of 91b and Type 14 Codes seen: 5, 1, X, DXZ, Z7, A5, D5.	<u>Rarity D</u>
12D14	(Dubus Figs.92b,c) Mar.1879 (Apr.1878 to May 1885) Dubus Fig.92a has been placed in Type 7 Codes seen: 3, ZX, 1.	<u>Rarity E</u>
13D14	(Dubus Fig.93) Apr.1879 (Jan.1881 to Apr.1893) Codes seen: E7, EX, EZZ, XA, G5, C5.	<u>Rarity E</u>
14D14C	(Dubus Fig.94) Mar.1882 (Aug.1883 to Aug.1891) Time in code Codes seen: 5, 7.	<u>Rarity F</u>
14D14T	(Dubus Fig.94) Not in proof books (Oct.1896 to Sep.1897) Time in full Times seen: 1.30 PM, 10.15 PM.	<u>Rarity G</u>



16D14	(Dubus Figs.95a,b,c) Jun.1881 (Aug.1879 to Jul.1895) Dubus Fig.95c in proof books Jun.1881 Codes seen: 5, ZZ, X.	<u>Rarity C</u>
17D14C	(Dubus Fig.96) Mar.1879 (Oct.1879 to Jun.1893) Time in code Codes seen: P7, FX.	<u>Rarity F</u>
17D14T	(Dubus Fig.96) Not in proof books (Aug.1897) Time in full Time seen: 12.15 AM.	<u>Rarity H</u>
21D14C	(Dubus Figs.97a,b) Jul.1879 (Aug.1889 to Jan.1895) Fig.97a in proof books Jul.1879 Time in code Code seen: DZ.	<u>Rarity G</u>
21D14T	(Dubus Fig.97b) Not in proof books (Nov.1894 to Dec.1903) Time in full Times seen: 9.45 PM, 6 PM, 7.15 PM, 7.45 PM, 10.15 PM.	<u>Rarity E</u>
22D14C	(Dubus Fig.98a,b) Jul.1879 (May 1880 to Sep.1895) Fig.98a in proof books Jul.1879 Time in code Codes seen: EZ, H7.	<u>Rarity F</u>
22D14T	(Dubus Fig.98b) Not in proof books (Nov.1896 to Mar.1904) Time in full Times seen: 7.45 PM, 3.15 PM, 6 PM, 10.15 PM.	<u>Rarity E</u>
26D14C	(Dubus Fig.99a) Nov.1881 (1893 to Mar.1895) Time in code Code seen: Z.	<u>Rarity G</u>
26D14T	(Dubus Figs.99b,c) Not in proof books (Oct.1897 to Jun.1902) Time in full Times seen: 10.15 PM, 9.45 PM, 7.45 PM.	<u>Rarity D</u>