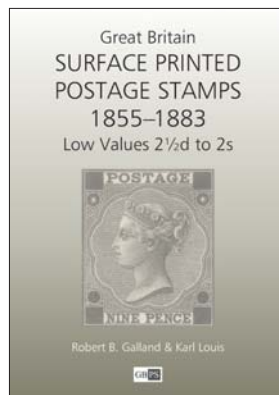


# *Surface Printed Postage Stamps 1855–1883* *Corrections and Additions — June 2012*

*Robert B. Galland FRPSL and Karl Louis FRPSL*

Since this book was published in 2009 more information has become available on items not originally recorded. The aim of this article is to correct mistakes in the original text and add new material. We have not changed original sources to newer ones. The following major auctions which included low value surface printed stamps have taken place since publication:

- *The Great Britain Philatelic Collections of Lady Mairi Bury*, Sotheby's, 24–26 November 2010.
- *The Wellington Collection*, Galerie Dreyfus, 6–10 June 2011.
- *The Philatelic Collection of Lord Steinberg, Great Britain Mint Multiples*, Sotheby's, 21 September 2011.
- *The Chartwell Collection of Surface Printed Issues*, Spink, 12 October 2011.



In addition, the Royal Philatelic Society London has obtained an unbound draft manuscript of a philatelic index prepared by Geoffrey Kellow. Included is a 'Surface Printed' section. The De La Rue collection is also now on the RPSL Web site.

## **Corrections** (*these relate to errors of fact*)

**Table 10.** 4d complete die proof: June 23/55 in manuscript [not 23 June 1855]. After Striking (MS) (Private collection).

**Page 56.** 4d Plate 4 imperforate pair should be ED-EE and not ED-EL.

**Table 27.** 6d Type D: under 'Plate number' should read 'None, no hairlines', i.e. it is from Plate 3.

**Page 72.** 3d Plate 8 colour trials: olive-brown AE-AF has not been split as stated (Chartwell, Lot 70).

**Table 39.** 4d Plate 8 registered 15 August 1865 and not 1866.

**Table 43.** 4d Type B: no illustration with original description. Date 1868 / Oct 1th [sic] / (Oct) 9th, i.e. two dates included (Chartwell, Lot 141).

**Page 87.** 6d Plate 8 mint block of eight is two blocks of four re-joined (Steinberg).

**Table 50.** The date of issue of 9d Plate 4 emblems watermark has been changed to 30 October 1865.

**Page 98.** 1s plate proofs: complete pane of 20 AA-ED, the others known come from the pane KA-OD, not 'the next pane down' as stated.

**Page 103.** 1s Spray Specimen Type 4, PI. This is not Type 4. It is either Type 1 (Samuel collection, Spink, Dec. 2003, Lot 1166) or Type 10. Similar mistake in Check-List, p. 205.

**Page 133.** 2½d Plate 10 mint strip of three PJ-PL has the current number in margin, not the plate number (Chartwell, Lot 33).

**Page 186.** Reference 40, pages 90–91, not 90–98 as stated.

## Additions

No alterations are made to the Check-List. Where the addition of new material has altered relative rarity this is documented in the relevant table. Further details of material already described are included if appropriate; this applies particularly to those items which we had not previously seen and for which we could find no provenance. These are marked (\*).

Section	Page	Additions	Source
<b>Introduction</b>			
Die proofs	Table 1	1s full-size die proof, <i>four now known, two in private hands.</i>	Chartwell, Lot 341.
Paper	15	Complete sheet, four panes of 60. Probably Large Garter watermark.	De La Rue collection.
Ink	17	Fugitive ink trials: 1s Plate 5 pair PG (green)-PH (blue) overprinted Specimen Type 2 (probably), not Type 9.	Private collection.
	17, 99	Fugitive ink trials: 1s Plate 4 GI in blue-green overprinted Specimen Type 9.	Grosvenor Auctions, Nov. 2010, Lot 817.
Specimen stamps	Table 4	Post Office Circulars: 6d on white paper, 3 October 1856, two more examples. <i>Six now known, four in private hands (R).</i>	Chartwell, Lot 199. National Museum of Ireland collection.
		Post Office Circulars: 4d and 9d, 8 January 1862, slightly reduced at top. <i>Two now known (VR).</i>	Wellington, Lot 4277.
		Post Office Circulars: 10d, 2s and 5s, June 1867, Tilley. <i>Five now known (VR).</i>	Wellington, Lot 4285.
Abnormals	26, Table 5	6d Plate 12 pale chestnut, pair CG-CH on cover from Suez to Aden dated 26 September 1873. RPS certificate 1951.	Feldman Auctions, Apr. 2010, Lot 20866.
		10d Plate 2 pair: London numeral 5 cancellation (*).	Chartwell, Lot 332.
	Table 5	4d sage-green Plate 17: KF part Bradford duplex, wmk inverted.	Grosvenor Auctions, Nov. 2010, Lot 1005.
Government Parcels Overprints	27	Type A red 3d FG, 6d JE (VR).	Chartwell, Lot 1129.
		Type B red 3d AE, 6d FE (VR).	Chartwell, Lot 1131.
		Type B black 3d EF, 6d FH (VR).	Chartwell, Lot 1132.
		Type C 3d GE, 6d DH (VR).	Chartwell, Lot 1133.
Unofficial Underprints	Table 7	2s blue, AS Henry.	Embassy Auction, Jan. 2010, Lot 237.
		6d Plate 8, 2lettering, trimmed wing margin.	Apex Philatelic Auctions, Nov. 2010, Lot 565.

## CORRECTIONS AND ADDITIONS — JUNE 2012

Value	Plate	Subsection	Page	Additions	Source
<b>No Corner Letters 1855–1862</b>					
4d medium garter	1/2	Specimen	38	Cancelled in manuscript (De La Rue colour trials).	Ref. 1, pp. 116–117.
6d	1	Essays	40	Full-size vertical die proof of head in lilac (VR). <i>Two now known, both in private collections.</i>	Private collection
		Die proofs	Table 14	Jan. 30/56. <i>Two now known (VR).</i>	Chartwell, Lot 190.
		Colour trials	41	Mauve: EB/MR-27/1856. <i>Four now known (VR).</i>	Andrew Lajer, summer 2011.
				Mauve: KF/AP-1/1856 (incorrectly described as KI).	Chartwell, Lot 192.
				Mauve: KF/AP-1/1856 top marginal. <i>Four now known (VR).</i> <i>At least 22 known in mauve with trial cancellations.</i>	Stanley Gibbons Web site, Nov. 2010.
				Green: KF/AP-1/1856 top marginal. <i>Two now known (VR).</i>	Stanley Gibbons Web site, Nov. 2010.
		Varieties	42	Wmk error: left rose omitted as seen from back of stamp. Possibly R1/1. <i>Two used copies known.</i> (See 9d Small White Corner Letters).	Grosvenor Auctions, Dec. 2009, Lot 2477; <i>Gibbons Stamp Monthly</i> , Dec. 2011, p. 104.
		Specimen	43	Cancelled in manuscript (De La Rue colour trials).	Ref. 1, p. 116–117.
Overprinted Cancelled: part of fugitive ink experiments.	Ref. 1, p. 144.				
1s	1	Colour trials	44	'39' cancellation: blue. <i>Two additions making five known (VR).</i>	Chartwell, Lot 348; Stanley Gibbons Web site, Nov. 2010 (top marginal).
				'39' cancellation: green. <i>Four now known (VR).</i>	Stanley Gibbons Web site, Nov. 2010 (top marginal).
				'39' cancellation: red. <i>Six now known (R).</i>	Stanley Gibbons Web site, Nov. 2010 (top marginal).
		Mint	46	Block of four.	Chartwell, Lot 353.
		Used		Irregular block of 13 on piece (with 6d) dated 24 Feb. 1857. '30' numeral cancellations.	Spink, Apr. 2010, Lot 1514A.
		Specimen		Overprinted Cancelled: part of fugitive ink experiments.	Ref. 1, p. 144.



Fig. 1



Fig. 2

Value	Plate	Subsection	Page	Additions	Source
<b>Small White Corner Letters 1862–1865</b>					
—	—	'Introduction'	47	Post Office Circular regarding corner letters, <i>four now known (VR)</i> .	Grosvenor Auctions, Apr. 2012, Lot 180.
3d	3	Plate proofs	49	AH on thin brownish card ( <i>U</i> ).	<i>Fig. 1</i> .
		Mint	50	CC as a single, implying that CB-CC pair (*) has been split. DA, DG. <i>40+1 now recorded</i> .	Stanley Gibbons list, Dec. 2010. Kellow.
	2/2	Specimen	51	Type 5: CF on blue paper.	Lady Mairi Bury, Lot 1411. <i>Fig. 2</i> .
	2 ?state			Cancelled in manuscript (De La Rue colour trials).	Ref. 1, pp. 116–117.
	3	Imperforate	52	CE	Grosvenor Auctions, Apr. 2012, Lot 865.
				DE.	Feldman Auctions, Apr. 2010, Lot 20833.
				AK-AL with plate number (Willets collection), EA-EB, AB, AL, BJ. <i>71 identified now</i> .	Kellow.
EJ, implying that EI-EJ (*) has been split.				Lady Mairi Bury, Lot 809.	
4d	3	Colour trials	54	FS in deep red; ?KL in orange. <i>Two of each of the three colours are now known (VR)</i> .	Private collection.
	4	Imperforate	56	AD-AE pair, implying that AD-BE (*) has been split.	Feldman Auctions, Dec. 2011, Lot 41398.
				EF.	Private collection.
				BI-BJ, EB-EC, FC-GC, FK-FL, AJ, BD, BG, DC, JF. <i>The addition of these 13, plus EF above, makes 111 known</i> .	Kellow
6d	3	Varieties	58	Blued paper (*) BF. Wmk inverted: QA-RB mint block of four.	Chartwell, Lot 204. Andrew Lajer.
	4	Imperforate	59	Pane AA-ED with current number in margin recorded in 1894. Now broken up.	Kellow.
9d	2	Varieties	62	Wmk error: AA, left rose omitted as seen from back of stamp. Mint. (See 6d No Corner Letters).	Grosvenor Auctions, Nov. 2010, Lot 747.
		Specimen		Type 2: MI (*). <i>Two now known (VR)</i> .	Chartwell, ex Lot 312.
1s	2	Used	65	AK with plate number in margin: plus 6d Plate 4 on registered cover Liverpool to Italy dated 13 January 1865.	Ref. 2.
		Varieties		Wmk reversed (*): DI.	Grosvenor Auctions, Apr. 2012, Lot 869.
	3	Imperforate	66	AA, EB. No information regarding watermarks. EI wmk inverted. <i>57 (upright, inverted or watermark unknown) now known</i> .	Kellow.

Value	Plate	Subsection	Page	Additions	Source
<b>Large White Corner Letters 1865–1872</b>					
½d	—	Essays	67	Full-size die proof in carmine. Red handstamp: Oct 5 1865. Manuscript: proof from die showing present state. Faint WFD handstamp. <i>There are therefore two in private hands and two others known (VR).</i>	Private collection.
				Cut-down and mounted in carmine.	Chartwell 'Line engraved', Feb. 2012, Lot 57.
3d	4	Plate proof	69	RL. (NK also listed but this does not fit with other letterings of these stamps). <i>Eight now known (plus NK).</i>	Kellow.
	8	Colour trials	72	Rose: DH. ( <i>All come from AE-EH pane, so 20 stamps for each colour possible.</i> )	Kellow.
				Bright orange: BG.	Stanley Gibbons list, Aug. 2010.
				Green: BH.	Chartwell, Lot 69.
				Olive-brown: BG-BH pair, CH.	Chartwell, Lot 72; Lady Mairi Bury, Lot 1460.
				Red-brown: AF, BG.	Lady Mairi Bury, Lot 1461; Chartwell, Lot 73.
		Used	74	TK with current number in margin: on cover London to Trieste dated 27 May 1872.	Ref. 2. <i>Fig. 3.</i>
	5	Varieties		Perkins paper: RF.	Kellow.
	4 ?wmk	Specimen		Cancelled in manuscript (De La Rue colour trials).	Ref. 1, pp. 116–117.
	8			Type 8: OL.	Grosvenor Auctions, April 2010, Lot 1516.
5	Imperforate	75	AL, mint. <i>Five mint and one used known (VR/U).</i>	Private collection.	
6			SD, mint.	Private collection.	
			AI mint. Three examples lettered AI (two mint, one used). <i>Eight mint and one used known (R/U).</i>	Kellow.	

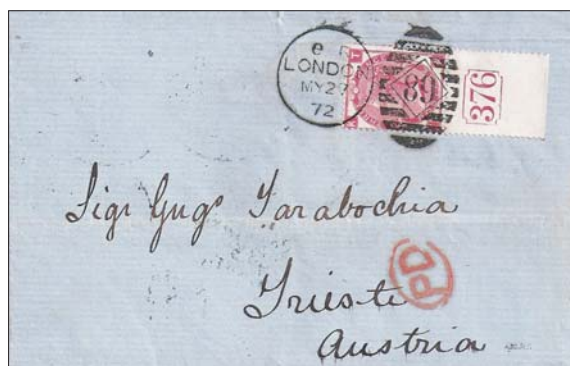


Fig. 3

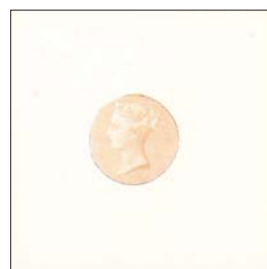


Fig. 4



Fig. 5

## CORRECTIONS AND ADDITIONS — JUNE 2012

<i>Value</i>	<i>Plate</i>	<i>Subsection</i>	<i>Page</i>	<i>Additions</i>	<i>Source</i>
4d	—	Die proofs	Table 41	Head: in yellow-orange on thick cream card, 5.3 cm square.	Embassy Auction, Oct. 2009, Lot 182. <i>Fig. 4.</i>
	14	Mint	80	Irregular block of seven, BG-BI/CG-DH.	Grosvenor Auctions, Apr. 2010, Lot 822.
	10	Used	81	TB with plate number in margin: London WC 8 February 1869 cancellation.	Ref. 2.
	12			Strip of three TJ-TL with current number in margin. Loughborough datestamp for 5 September 1872.	Ref. 2.
	13			Block of six, LG-MI. B01 Alexandria cancellation.	Grosvenor Auctions, Nov. 2010, Lot 768.
	12	Varieties	82	Perkins paper: NK, implying that pair NK-NL has been split.	Stanley Gibbons list, Dec. 2010.
				Perkins paper: OK-OL, MJ, NI, SH, TK.	Kellow.
				Perkins paper overprinted Specimen: TF.	Kellow.
				Frame breaks: BK, BL and LE.	<i>Gibbons Stamp Monthly</i> , Apr. 2011, p. 126.
				Right plate number twisted anti-clockwise: SL.	Ref. 3.
14			Left plate number reads '04': SD.	Ref. 3.	
12	Imperforate	83	HC-HD, SH-SI. <i>Five known (R).</i>	Kellow.	
6d	6	Plate proofs	85	EJ. (C).	Kellow.
	9	Colour trials	86	Block of four SK-TL with current number in margin (*) has been split vertically.	Stanley Gibbons Web site, 2012.
		Die proofs	Table 46	Oct 27 1871 design change. Two now known (R).	Chartwell, Lot 237.
	5	Used	88	First day cover: from London to Sicily with II.	Ref. 4.
	6 Spray			TB with plate number in margin: on piece, Bute Dock cancellation for 25 February 1869.	Ref. 2.
	8			First day cover: from London to Hamburg with FA.	Ref. 4.
	9	Varieties	90	Perkins paper: SE-SF, QL, SG.	Kellow.
				Perkins paper Specimen perforated: QI. <i>Seven now known (R).</i>	Grosvenor Auctions, Nov. 2010, Lot 790.
		Imperforate	91	AI, BI unused. <i>Eight unused (R), two used (VR) known.</i>	Kellow.
	11 deep chestnut	Used	93	First day cover: from London to Sweden with PG.	Ref. 4.
11 chestnut	TA-TB pair with plate number in margin: Hanley 6 December 187? cancellation.			Ref. 2.	
11 pale buff	Specimen	94	Cancelled in manuscript (De La Rue colour trials).	Ref. 1, pp. 116–117.	

Value	Plate	Subsection	Page	Additions	Source
9d	4	Plate proofs	95	HI-HJ, BI. These do not come from KI-OL pane from which most of these are known, so may not be correct.	Kellow.
	4 Emblems	Used	97	Front, first day of issue (30 October 1865, see corrections): from Manchester to Constantinople with BH.	Ref. 5.
				TK with current number in margin: Newcastle on Tyne 545 duplex cancellation.	Ref. 2.
	4 Spray	Specimen		Type 2: pane of 20 AA-ED with current number in margin. <i>Five panes now known.</i>	Chartwell, Lot 307.
1s	4	Colour trials	99 (and 17)	Fugitive ink trials: 1s Plate 4 GI in blue-green overprinted Specimen Type 9.	Grosvenor Auctions. Nov. 2010, Lot 817.
	5		99	CK	Chartwell, Lot 370.
	4 Emblems	Used	102	First day cover: from London to Sicily with HJ and JL.	Ref. 4.
				Block of four, IB-JC on registered cover from Liverpool to Turin dated 25 April 1865. With strip of three, two singles and a pair and 4d Plate 4.	Spink, Apr. 2010, Lot 1522.
	<i>Eleven are known with plate numbers in margin and three with current numbers.</i>			Ref. 2.	
	<i>Nine are known with plate numbers in margin and four with current numbers.</i>			Ref. 2.	
	5				
	6				
	7			TB with plate number in margin: ?Southampton Telegraph Office cancellation for 28 July 1873.	Ref. 2.
	4 Emblems	Varieties	103	Imperforate between vertical pair: SK used single.	Chartwell, ex Lot 409. <i>Fig 5.</i>
	4 Spray			Perkins paper: QL, TL.	Kellow.
5	Wmk inverted: block of four AA-BB Dundee datestamp for January 1872.				
	Wmk inverted: block of four BK-CL 37 Leadenhalldatestamp for 23 February 1872.			Stanley Gibbons list, June 2010.	
	Specimen	104	Type 8: ED. <i>Two known (VR).</i>	Spink, Apr. 2010, ex Lot 1576.	



Fig. 6



Fig. 7

## CORRECTIONS AND ADDITIONS — JUNE 2012

<i>Value</i>	<i>Plate</i>	<i>Subsection</i>	<i>Page</i>	<i>Additions</i>	<i>Source</i>
Large White Corner Letters 1867-1883					
10d	1	Die proofs	Table 62	Full-size, red-brown, matt card, horizontal format.	Chartwell, Lot 317. (Lot 316 (Stohtert) already included.)
		Varieties	108	Wmk inverted block of 4 GG-HH, Fouberts Place datestamp for 19 March 1872.	Bill Barrell list, Apr. 2010.
				Wmk inverted HG with Regent Street cancellation for 1872.	Embassy list, Sept. 2010.
				Wmk inverted BI.	Arthur Ryan, private treaty, Jan. 2011.
		Specimen	108	Type 2: pair AK-AL with plate number in margin.	Wellington, Lot 4299.
				Type 8: GL ( <i>U</i> ).	Grosvenor Auctions, Nov. 2010, Lot 802.
				Type 11: HG and JG.	Grosvenor Auctions, Nov. 2010, Lots 807 and 808.
				Type 11: IH ( <i>R</i> ). <i>Six now known (R)</i> .	Chartwell, Lot 335.
				Cancelled in manuscript (De La Rue colour trials).	Ref. 1, pp. 116–117.
2s blue	1	Used	112	TB with plate number: Liverpool Exchange 29 May 1872 cancellation.	Ref. 2.
				Block of four SK-TL with current number in margin: Lombard Exchange 4 January 1872 cancellation	Ref. 2.
		Specimen	112	Cancelled in manuscript (De La Rue colour trials).	Ref. 1, pp. 116–117.
		Imperforate		TL in deep shade ( <i>R</i> ).	Private collection.
2s brown	1	Mint	114	Pair: IJ-IK.	Lady Mairi Bury, Lot 1564.
		Used		HJ-HK ( <i>R</i> ).	Kellow.
				AI-AJ, TI-TJ pairs. <i>Five now recorded</i> .	Kellow.
		Varieties	Wmk inverted FD on small piece with Swansea 763 numeral cancellation.	Wellington, Lot 4320.	
			Wmk inverted re-joined pair EJ-EK with A25 Malta cancellation.	Cavendish Philatelic Auctions, Mar. 2010, Lot 192.	
		Imperforate	114	PG-PH pair.	Spink, Sept. 2010, Lot 259.
				OI, RJ. <i>24 known in private hands</i> .	Kellow.
		Forgeries	117	EH wmk details: Crown, inverted. Same stamp as previously described (*).	Grosvenor Auctions, Nov. 2010, Lot 848.
			118	PK wmk details: unwatermarked paper. Different stamp from that originally described which has no comment regarding watermark.	Grosvenor Auctions, Nov. 2010, Lot 849.
Die proof with no corner letters: lake and orange, 'lower' pair only i.e. no plate number.	Chartwell, Lot 450.				



## CORRECTIONS AND ADDITIONS — JUNE 2012

Value	Plate	Subsection	Page	Additions	Source
<b>Change from Large White to Large Coloured Corner Letters</b>					
3d	8 KK-KK	Pencilled numbers	71	21 43.	Lady Mairi Bury, Lot 1457.
				12 34. <i>All four KK-KK now accounted for.</i>	Chartwell, Lot 85. <i>Fig. 6.</i>
6d	11 HH-HH	Pencilled numbers	71	34 (21) 12.	Chartwell, Lot 251.
10d	4 GH-HG	Modified designs	73	Vertical die proof in red-brown. Plate number plugs in low position, endorsed Oct 72 (MS).	Chartwell, Lot 322. <i>Fig. 7.</i>
<b>Large Coloured Corner Letters 1873–1884</b>					
2½d	—	Die proofs	Table 75	Feb 10 1875, BH, Duplicate (MS), H (*).	Chartwell, Lot 7.
	6			Apr 5 1876, AS, V (*).	Chartwell, Lot 8.
	8			Mar 12 1877 (MS), AS (MS), V (*).	Chartwell, Lot 9.
	9			May 31 1877, BK-KB (not KB-BK as originally described), V (*).	Chartwell, Lot 11.
	10			Aug 25 1877 (MS), B- -B, AS (MS), V. This may be the proof previously described as Aug 25 (MS), AS (MS) (*).	Chartwell, Lot 12. <i>Fig. 8.</i>
	11			Nov 19 1877, AS, V (*).	Chartwell, Lot 13.
	13			July 10 1878, no endorsements (*).	Chartwell, Lot 15.
	14			Oct 24 1878, AS, V (*).	Chartwell, Lot 16.
	19			3 Mar 1880, BS (MS), H (*). <i>Not the same as the one listed so at least two of these exist.</i>	Chartwell, Lot 17.
	10			Table 77	D, BA-AB (*). (29/8/77, 192 leads on reverse).
	1	Mint	132	Blue paper; block of four DD-EE.	Steinberg, Lot 98.
	12		133	PB with plate number in margin.	Grosvenor. Nov. 2010, Lot 949.
	1	Used	134	First day cover: from London to Palermo with KD.	Ref. 4.
	2			Block of four AH-BI on part cover from Isle of Wight to Gibraltar dated 29 December 1875.	<i>GBPS Newsletter</i> , Nov./Dec. 2005.
	6			PB with plate number in margin: London 28 November 1876 cancellation.	Ref. 4.
	10			PB with plate number in margin on cover from London to Paris dated 27 May 1878.	Private collection.
	2	Varieties	Table 78	LH-FL on cover: Liverpool to Charleston dated 28 October 1875. <i>Eleven now known on cover.</i>	Corinphilia Auction, Apr. 2012, Lot 4058.
9	Specimen	135	Cancelled in manuscript (De La Rue colour trials).	Ref. 1, pp. 116–117.	
17 blue			Type 9: FE overprinted twice.	Grosvenor Auctions, Nov. 2010, ex Lot 955.	

Value	Plate	Subsection	Page	Additions	Source
3d	16	Die proofs	Table 80	Apr 24 1874, AS, V (*). <i>Two now known.</i>	Lady Mairi Bury, Lot 1504.
	17			Aug 27 1874, AS, H (*). <i>Two now known.</i>	Chartwell, Lot 87.
	17	Mint	142	AK-AL pair with plate number in margin.	Grosvenor Auctions, Nov. 2010, Lot 963.
	20			TB with plate number in margin and extra row of horizontal perforations in margin.	Lady Mari Bury, Lot 1515.
	12	Imprimatur	143	TK with current number in margin.	Chartwell, Lot 96.
4d	16	Plate proofs	145	AL on 'thin card'. <i>Three recorded (VR).</i>	Chartwell, Lot 161.
	15	Colour trials	146	Pale olive-bistre Specimen Type 9: BA (U).	Chartwell, Lot ex 170.
				Turquoise-blue Specimen Type 8 (diagonal): TF. <i>Two with diagonal and one with horizontal overprint now known.</i>	Spink, Apr. 2010, ex Lot 1580.
			147	Grey-lilac Specimen Type 9: AB.	Chartwell, Lot ex 170.
				Grey-lilac Specimen Type 9: BG. <i>Two recorded.</i>	Spink, April 2010, ex Lot 1580.
	16	Mint	148	Chestnut Specimen Type 9: AC (U).	Spink, April 2010, ex Lot 1580.
				Pale orange-brown: AA-BB pair with current number in margin.	Feldman Auctions, Apr. 2010, Lot 20895.
16	Mint	148	TB with plate number in margin.	Stanley Gibbons auction, March 2012.	

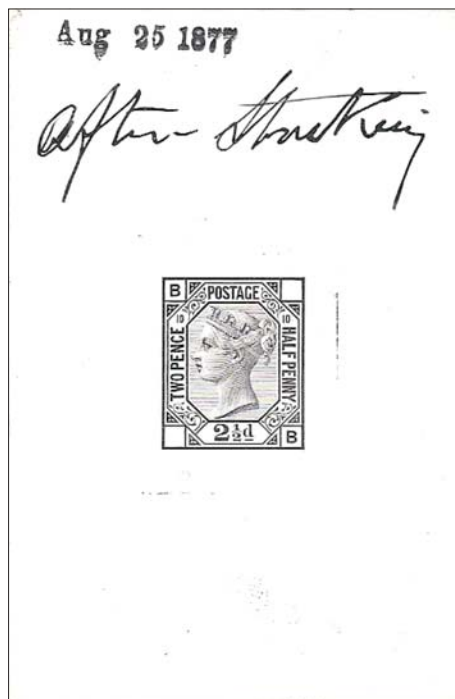


Fig. 8



Fig. 9

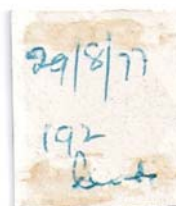


Fig. 10



Fig. 11

Value	Plate	Subsection	Page	Additions	Source
6d	15	Plate proofs	150	FL. <i>Two recorded (VR).</i>	Royal Philatelic Collection.
	16			SK, TK.	Royal Philatelic Collection.
				TD. <i>Nine recorded (R).</i>	Kellow.
	13	Used	154	MI bisect on piece with 353 Hemel Hempstead cancellation.	<i>Fig. 11.</i>
14	Specimen	Type 8: block of eight FI-GL.		Chartwell, Lot 263.	
8d	1	Colour trials	156	Yellow not overprinted Specimen: JF ( <i>U</i> ).	Private collection.
		Mint	158	Purple-brown: block of four DA-EB.	De La Rue collection.
		Varieties		Orange: TA with plate number in margin.	Grosvenor Auctions, May 2011, Lot 3870.
				Orange: wmk reversed: SJ.	Cavendish Auctions, March 2011, Lot 919.
1s	—	Die proofs	Table 100	May 17 1872, BH, H, italic '2' printed on card (*). <i>Three of these now known.</i>	Chartwell, Lot 387.
	13	Plate proofs	162	SK-TL originally recorded as a block of four. SK and TK are in the Royal Philatelic Collection (*). <i>SL and TL make 12 known on white wove paper.</i>	Kellow.
	8	Used	165	TB with plate number in margin: Birmingham 7 November 1873 cancellation.	Ref. 2.
	12	Varieties		Wmk inverted: block of eight AE-BH (*) now split, AG-BH still exists as a block of four. Also has double perforations on the A row.	—
<b>The Provisional Issue of 1880</b>					
2½d	22	Used	169	Block of 10, GH-HL with Throgmorton Avenue datestamp for 2 September 1882.	K. and C. Philatelics.
		Die proofs	Table 105	7 Mar 1880, H (*). <i>Two now known.</i>	Chartwell, Lot 18.
		Varieties	170	Partial doubling of left plate number and decoration above: EJ.	<i>Gibbons Stamp Monthly</i> , Apr. 2011, p. 126.
6d	17 or 18	Used	175	Cover from London to Caracas dated 15 July 1883 with block of 12, LD-OF.	Wellington, Lot 4474.
<b>The Temporary Unified Issue</b>					
6d	18	Varieties	183	Left dot very small: OG. Mint.	Grosvenor Auctions, Nov. 2010, ex Lot 1029.
1s	13	Specimen	184	Type 9: ED. <i>Seventeen now known.</i>	Spink, Sept. 2010, Lot 276.

## References

1. Samuel, M., A. K. Huggins. *Specimen Stamps and Stationery of Great Britain*, GBPS, 1980.
2. Galland, Bob. '1s Plates 5 and 6 Anomaly. Used Low Value Surface Printed stamps with Plate and Current Numbers in Margin', GBJ, Vol. 50, pp. 49–56, 2012.
3. Kaiserman, D. '4d Vermilion Varieties', GBJ, Vol. 50, p. 71, 2012.
4. Galland, Bob. 'Surface Printed First Day Covers', GBJ, Vol. 50, pp. 8–10, 2012.
5. Amor, Nick. '9d Straw Plate 4 First Day Cover', GBJ, Vol. 50, p. 41, 2012. ☒